

Return of Organization Exempt From Income Tax

Under section 501(c), 527, or 4947(a)(1) of the Internal Revenue Code (except private foundations)

2022

Do not enter social security numbers on this form as it may be made public.

Open to Public Inspection

Go to www.irs.gov/Form990 for instructions and the latest information.

Department of the Treasury
Internal Revenue Service

A For the 2022 calendar year, or tax year beginning , and ending

<p>B Check if applicable:</p> <input type="checkbox"/> Address change <input type="checkbox"/> Name change <input type="checkbox"/> Initial return <input type="checkbox"/> Final return/terminated <input type="checkbox"/> Amended return <input type="checkbox"/> Application pending	<p>C Name of organization TEAM JACK FOUNDATION INC</p> <p>Doing business as</p> <p>Number and street (or P.O. box if mail is not delivered to street address) Room/suite PO BOX 607</p> <p>City or town, state or province, country, and ZIP or foreign postal code ATKINSON NE 68713</p> <p>F Name and address of principal officer: BRIANNA HOFFMAN PO BOX 607 ATKINSON NE 68713</p>	<p>D Employer identification number 46-2301134</p> <p>E Telephone number 402-925-2120</p> <p>G Gross receipts \$ 1,476,718</p> <p>H(a) Is this a group return for subordinates? <input type="checkbox"/> Yes <input checked="" type="checkbox"/> No</p> <p>H(b) Are all subordinates included? <input type="checkbox"/> Yes <input type="checkbox"/> No If "No," attach a list. See instructions</p>
<p>I Tax-exempt status: <input checked="" type="checkbox"/> 501(c)(3) <input type="checkbox"/> 501(c) () (insert no.) <input type="checkbox"/> 4947(a)(1) or <input type="checkbox"/> 527</p>		
<p>J Website: TEAMJACKFOUNDATION.ORG</p>		
<p>K Form of organization: <input checked="" type="checkbox"/> Corporation <input type="checkbox"/> Trust <input type="checkbox"/> Association <input type="checkbox"/> Other</p>		<p>L Year of formation: 2013 M State of legal domicile: NE</p>

Part I Summary

Activities & Governance	<p>1 Briefly describe the organization's mission or most significant activities: RAISE MONEY TO FUND IMPACTFUL PEDIATRIC BRAIN CANCER RESEARCH AND WORKS TO CREATE NATIONAL AWARENESS FOR THE DISEASE.</p> <p>2 Check this box <input type="checkbox"/> if the organization discontinued its operations or disposed of more than 25% of its net assets.</p> <p>3 Number of voting members of the governing body (Part VI, line 1a) 3 9</p> <p>4 Number of independent voting members of the governing body (Part VI, line 1b) 4 9</p> <p>5 Total number of individuals employed in calendar year 2022 (Part V, line 2a) 5 5</p> <p>6 Total number of volunteers (estimate if necessary) 6 154</p> <p>7a Total unrelated business revenue from Part VIII, column (C), line 12 7a 0</p> <p>7b Net unrelated business taxable income from Form 990-T, Part I, line 11 7b 0</p>																									
Revenue		<table border="1" style="width:100%; border-collapse: collapse;"> <thead> <tr> <th></th> <th>Prior Year</th> <th>Current Year</th> </tr> </thead> <tbody> <tr> <td>8 Contributions and grants (Part VIII, line 1h)</td> <td style="text-align: right;">1,151,653</td> <td style="text-align: right;">1,187,696</td> </tr> <tr> <td>9 Program service revenue (Part VIII, line 2g)</td> <td></td> <td style="text-align: right;">0</td> </tr> <tr> <td>10 Investment income (Part VIII, column (A), lines 3, 4, and 7d)</td> <td style="text-align: right;">32,710</td> <td style="text-align: right;">17,106</td> </tr> <tr> <td>11 Other revenue (Part VIII, column (A), lines 5, 6d, 8c, 9c, 10c, and 11e)</td> <td style="text-align: right;">73,678</td> <td style="text-align: right;">7,547</td> </tr> <tr> <td>12 Total revenue – add lines 8 through 11 (must equal Part VIII, column (A), line 12)</td> <td style="text-align: right;">1,258,041</td> <td style="text-align: right;">1,212,349</td> </tr> </tbody> </table>		Prior Year	Current Year	8 Contributions and grants (Part VIII, line 1h)	1,151,653	1,187,696	9 Program service revenue (Part VIII, line 2g)		0	10 Investment income (Part VIII, column (A), lines 3, 4, and 7d)	32,710	17,106	11 Other revenue (Part VIII, column (A), lines 5, 6d, 8c, 9c, 10c, and 11e)	73,678	7,547	12 Total revenue – add lines 8 through 11 (must equal Part VIII, column (A), line 12)	1,258,041	1,212,349						
	Prior Year	Current Year																								
8 Contributions and grants (Part VIII, line 1h)	1,151,653	1,187,696																								
9 Program service revenue (Part VIII, line 2g)		0																								
10 Investment income (Part VIII, column (A), lines 3, 4, and 7d)	32,710	17,106																								
11 Other revenue (Part VIII, column (A), lines 5, 6d, 8c, 9c, 10c, and 11e)	73,678	7,547																								
12 Total revenue – add lines 8 through 11 (must equal Part VIII, column (A), line 12)	1,258,041	1,212,349																								
Expenses		<table border="1" style="width:100%; border-collapse: collapse;"> <tbody> <tr> <td>13 Grants and similar amounts paid (Part IX, column (A), lines 1–3)</td> <td style="text-align: right;">405,637</td> <td style="text-align: right;">959,672</td> </tr> <tr> <td>14 Benefits paid to or for members (Part IX, column (A), line 4)</td> <td></td> <td style="text-align: right;">0</td> </tr> <tr> <td>15 Salaries, other compensation, employee benefits (Part IX, column (A), lines 5–10)</td> <td style="text-align: right;">207,052</td> <td style="text-align: right;">223,220</td> </tr> <tr> <td>16a Professional fundraising fees (Part IX, column (A), line 11e)</td> <td></td> <td style="text-align: right;">0</td> </tr> <tr> <td>b Total fundraising expenses (Part IX, column (D), line 25) 201,684</td> <td></td> <td></td> </tr> <tr> <td>17 Other expenses (Part IX, column (A), lines 11a–11d, 11f–24e)</td> <td style="text-align: right;">196,744</td> <td style="text-align: right;">196,596</td> </tr> <tr> <td>18 Total expenses. Add lines 13–17 (must equal Part IX, column (A), line 25)</td> <td style="text-align: right;">809,433</td> <td style="text-align: right;">1,379,488</td> </tr> <tr> <td>19 Revenue less expenses. Subtract line 18 from line 12</td> <td style="text-align: right;">448,608</td> <td style="text-align: right;">-167,139</td> </tr> </tbody> </table>	13 Grants and similar amounts paid (Part IX, column (A), lines 1–3)	405,637	959,672	14 Benefits paid to or for members (Part IX, column (A), line 4)		0	15 Salaries, other compensation, employee benefits (Part IX, column (A), lines 5–10)	207,052	223,220	16a Professional fundraising fees (Part IX, column (A), line 11e)		0	b Total fundraising expenses (Part IX, column (D), line 25) 201,684			17 Other expenses (Part IX, column (A), lines 11a–11d, 11f–24e)	196,744	196,596	18 Total expenses. Add lines 13–17 (must equal Part IX, column (A), line 25)	809,433	1,379,488	19 Revenue less expenses. Subtract line 18 from line 12	448,608	-167,139
13 Grants and similar amounts paid (Part IX, column (A), lines 1–3)	405,637	959,672																								
14 Benefits paid to or for members (Part IX, column (A), line 4)		0																								
15 Salaries, other compensation, employee benefits (Part IX, column (A), lines 5–10)	207,052	223,220																								
16a Professional fundraising fees (Part IX, column (A), line 11e)		0																								
b Total fundraising expenses (Part IX, column (D), line 25) 201,684																										
17 Other expenses (Part IX, column (A), lines 11a–11d, 11f–24e)	196,744	196,596																								
18 Total expenses. Add lines 13–17 (must equal Part IX, column (A), line 25)	809,433	1,379,488																								
19 Revenue less expenses. Subtract line 18 from line 12	448,608	-167,139																								
Net Assets or Fund Balances		<table border="1" style="width:100%; border-collapse: collapse;"> <thead> <tr> <th></th> <th>Beginning of Current Year</th> <th>End of Year</th> </tr> </thead> <tbody> <tr> <td>20 Total assets (Part X, line 16)</td> <td style="text-align: right;">3,224,014</td> <td style="text-align: right;">3,297,011</td> </tr> <tr> <td>21 Total liabilities (Part X, line 26)</td> <td style="text-align: right;">844,521</td> <td style="text-align: right;">1,145,996</td> </tr> <tr> <td>22 Net assets or fund balances. Subtract line 21 from line 20</td> <td style="text-align: right;">2,379,493</td> <td style="text-align: right;">2,151,015</td> </tr> </tbody> </table>		Beginning of Current Year	End of Year	20 Total assets (Part X, line 16)	3,224,014	3,297,011	21 Total liabilities (Part X, line 26)	844,521	1,145,996	22 Net assets or fund balances. Subtract line 21 from line 20	2,379,493	2,151,015												
	Beginning of Current Year	End of Year																								
20 Total assets (Part X, line 16)	3,224,014	3,297,011																								
21 Total liabilities (Part X, line 26)	844,521	1,145,996																								
22 Net assets or fund balances. Subtract line 21 from line 20	2,379,493	2,151,015																								

Part II Signature Block

Under penalties of perjury, I declare that I have examined this return, including accompanying schedules and statements, and to the best of my knowledge and belief, it is true, correct, and complete. Declaration of preparer (other than officer) is based on all information of which preparer has any knowledge.

Sign Here	<p>Signature of officer BRIANNA HOFFMAN Type or print name and title</p>	<p>Date PRESIDENT</p>
Paid Preparer Use Only	<p>Print/Type preparer's name LORI L OLSON</p> <p>Preparer's signature <i>Lori Olson</i></p> <p>Date 9-29-23</p> <p>Check <input type="checkbox"/> if self-employed PTIN P00249567</p> <p>Firm's name DANA F. COLE & COMPANY LLP</p> <p>Firm's address PO BOX 359 ONEILL, NE 68763</p> <p>Firm's EIN 47-0526649</p> <p>Phone no. 402-336-2030</p>	

May the IRS discuss this return with the preparer shown above? See instructions Yes No

Part III Statement of Program Service Accomplishments

Check if Schedule O contains a response or note to any line in this Part III

1 Briefly describe the organization's mission:

RAISE MONEY TO FUND IMPACTFUL PEDIATRIC BRAIN CANCER RESEARCH AND WORKS TO CREATE NATIONAL AWARENESS FOR THE DISEASE.

2 Did the organization undertake any significant program services during the year which were not listed on the prior Form 990 or 990-EZ? Yes No

If "Yes," describe these new services on Schedule O.

3 Did the organization cease conducting, or make significant changes in how it conducts, any program services? Yes No

If "Yes," describe these changes on Schedule O.

4 Describe the organization's program service accomplishments for each of its three largest program services, as measured by expenses. Section 501(c)(3) and 501(c)(4) organizations are required to report the amount of grants and allocations to others, the total expenses, and revenue, if any, for each program service reported.

4a (Code:) (Expenses \$ **1,111,604** including grants of \$ **959,672**) (Revenue \$)

RAISE MONEY TO FUND IMPACTFUL PEDIATRIC BRAIN CANCER RESEARCH AND WORK TO CREATE NATIONAL AWARENESS OF PEDIATRIC BRAIN CANCER. IN ADDITION TO FUNDING RESEARCH, THE FOUNDATION PROVIDES SUPPORT TO OVER 50 AFFECTED FAMILIES AND THROUGH ITS WEBSITE AND VARIOUS EVENTS INCLUDING MERCHANDISE SALES CREATES NATIONAL AWARENESS OF PEDIATRIC BRAIN CANCER.

4b (Code:) (Expenses \$ including grants of \$) (Revenue \$)
N/A

4c (Code:) (Expenses \$ including grants of \$) (Revenue \$)
N/A

4d Other program services (Describe on Schedule O.)

(Expenses \$ including grants of \$) (Revenue \$)

4e Total program service expenses **1,111,604**

Part IV Checklist of Required Schedules

		Yes	No
1	Is the organization described in section 501(c)(3) or 4947(a)(1) (other than a private foundation)? If "Yes," complete Schedule A	X	
2	Is the organization required to complete Schedule B, Schedule of Contributors? See instructions	X	
3	Did the organization engage in direct or indirect political campaign activities on behalf of or in opposition to candidates for public office? If "Yes," complete Schedule C, Part I		X
4	Section 501(c)(3) organizations. Did the organization engage in lobbying activities, or have a section 501(h) election in effect during the tax year? If "Yes," complete Schedule C, Part II		X
5	Is the organization a section 501(c)(4), 501(c)(5), or 501(c)(6) organization that receives membership dues, assessments, or similar amounts as defined in Rev. Proc. 98-19? If "Yes," complete Schedule C, Part III		X
6	Did the organization maintain any donor advised funds or any similar funds or accounts for which donors have the right to provide advice on the distribution or investment of amounts in such funds or accounts? If "Yes," complete Schedule D, Part I		X
7	Did the organization receive or hold a conservation easement, including easements to preserve open space, the environment, historic land areas, or historic structures? If "Yes," complete Schedule D, Part II		X
8	Did the organization maintain collections of works of art, historical treasures, or other similar assets? If "Yes," complete Schedule D, Part III		X
9	Did the organization report an amount in Part X, line 21, for escrow or custodial account liability, serve as a custodian for amounts not listed in Part X; or provide credit counseling, debt management, credit repair, or debt negotiation services? If "Yes," complete Schedule D, Part IV		X
10	Did the organization, directly or through a related organization, hold assets in donor-restricted endowments or in quasi endowments? If "Yes," complete Schedule D, Part V		X
11	If the organization's answer to any of the following questions is "Yes," then complete Schedule D, Parts VI, VII, VIII, IX, or X, as applicable.		
a	Did the organization report an amount for land, buildings, and equipment in Part X, line 10? If "Yes," complete Schedule D, Part VI	X	
b	Did the organization report an amount for investments—other securities in Part X, line 12, that is 5% or more of its total assets reported in Part X, line 16? If "Yes," complete Schedule D, Part VII		X
c	Did the organization report an amount for investments—program related in Part X, line 13, that is 5% or more of its total assets reported in Part X, line 16? If "Yes," complete Schedule D, Part VIII		X
d	Did the organization report an amount for other assets in Part X, line 15, that is 5% or more of its total assets reported in Part X, line 16? If "Yes," complete Schedule D, Part IX		X
e	Did the organization report an amount for other liabilities in Part X, line 25? If "Yes," complete Schedule D, Part X	X	
f	Did the organization's separate or consolidated financial statements for the tax year include a footnote that addresses the organization's liability for uncertain tax positions under FIN 48 (ASC 740)? If "Yes," complete Schedule D, Part X		X
12a	Did the organization obtain separate, independent audited financial statements for the tax year? If "Yes," complete Schedule D, Parts XI and XII	X	
b	Was the organization included in consolidated, independent audited financial statements for the tax year? If "Yes," and if the organization answered "No" to line 12a, then completing Schedule D, Parts XI and XII is optional		X
13	Is the organization a school described in section 170(b)(1)(A)(ii)? If "Yes," complete Schedule E		X
14a	Did the organization maintain an office, employees, or agents outside of the United States?		X
b	Did the organization have aggregate revenues or expenses of more than \$10,000 from grantmaking, fundraising, business, investment, and program service activities outside the United States, or aggregate foreign investments valued at \$100,000 or more? If "Yes," complete Schedule F, Parts I and IV		X
15	Did the organization report on Part IX, column (A), line 3, more than \$5,000 of grants or other assistance to or for any foreign organization? If "Yes," complete Schedule F, Parts II and IV		X
16	Did the organization report on Part IX, column (A), line 3, more than \$5,000 of aggregate grants or other assistance to or for foreign individuals? If "Yes," complete Schedule F, Parts III and IV		X
17	Did the organization report a total of more than \$15,000 of expenses for professional fundraising services on Part IX, column (A), lines 6 and 11e? If "Yes," complete Schedule G, Part I. See instructions		X
18	Did the organization report more than \$15,000 total of fundraising event gross income and contributions on Part VIII, lines 1c and 8a? If "Yes," complete Schedule G, Part II	X	
19	Did the organization report more than \$15,000 of gross income from gaming activities on Part VIII, line 9a? If "Yes," complete Schedule G, Part III	X	
20a	Did the organization operate one or more hospital facilities? If "Yes," complete Schedule H		X
b	If "Yes" to line 20a, did the organization attach a copy of its audited financial statements to this return?		
21	Did the organization report more than \$5,000 of grants or other assistance to any domestic organization or domestic government on Part IX, column (A), line 1? If "Yes," complete Schedule I, Parts I and II	X	

Part IV Checklist of Required Schedules (continued)

		Yes	No
22	Did the organization report more than \$5,000 of grants or other assistance to or for domestic individuals on Part IX, column (A), line 2? <i>If "Yes," complete Schedule I, Parts I and III</i>		X
23	Did the organization answer "Yes" to Part VII, Section A, line 3, 4, or 5 about compensation of the organization's current and former officers, directors, trustees, key employees, and highest compensated employees? <i>If "Yes," complete Schedule J</i>		X
24a	Did the organization have a tax-exempt bond issue with an outstanding principal amount of more than \$100,000 as of the last day of the year, that was issued after December 31, 2002? <i>If "Yes," answer lines 24b through 24d and complete Schedule K. If "No," go to line 25a</i>		X
b	Did the organization invest any proceeds of tax-exempt bonds beyond a temporary period exception?		
c	Did the organization maintain an escrow account other than a refunding escrow at any time during the year to defease any tax-exempt bonds?		
d	Did the organization act as an "on behalf of" issuer for bonds outstanding at any time during the year?		
25a	Section 501(c)(3), 501(c)(4), and 501(c)(29) organizations. Did the organization engage in an excess benefit transaction with a disqualified person during the year? <i>If "Yes," complete Schedule L, Part I</i>		X
b	Is the organization aware that it engaged in an excess benefit transaction with a disqualified person in a prior year, and that the transaction has not been reported on any of the organization's prior Forms 990 or 990-EZ? <i>If "Yes," complete Schedule L, Part I</i>		X
26	Did the organization report any amount on Part X, line 5 or 22, for receivables from or payables to any current or former officer, director, trustee, key employee, creator or founder, substantial contributor, or 35% controlled entity or family member of any of these persons? <i>If "Yes," complete Schedule L, Part II</i>		X
27	Did the organization provide a grant or other assistance to any current or former officer, director, trustee, key employee, creator or founder, substantial contributor or employee thereof, a grant selection committee member, or to a 35% controlled entity (including an employee thereof) or family member of any of these persons? <i>If "Yes," complete Schedule L, Part III</i>		X
28	Was the organization a party to a business transaction with one of the following parties (see the Schedule L, Part IV, instructions for applicable filing thresholds, conditions, and exceptions):		
a	A current or former officer, director, trustee, key employee, creator or founder, or substantial contributor? <i>If "Yes," complete Schedule L, Part IV</i>		X
b	A family member of any individual described in line 28a? <i>If "Yes," complete Schedule L, Part IV</i>		X
c	A 35% controlled entity of one or more individuals and/or organizations described in line 28a or 28b? <i>If "Yes," complete Schedule L, Part IV</i>		X
29	Did the organization receive more than \$25,000 in non-cash contributions? <i>If "Yes," complete Schedule M</i>	X	
30	Did the organization receive contributions of art, historical treasures, or other similar assets, or qualified conservation contributions? <i>If "Yes," complete Schedule M</i>		X
31	Did the organization liquidate, terminate, or dissolve and cease operations? <i>If "Yes," complete Schedule N, Part I</i>		X
32	Did the organization sell, exchange, dispose of, or transfer more than 25% of its net assets? <i>If "Yes," complete Schedule N, Part II</i>		X
33	Did the organization own 100% of an entity disregarded as separate from the organization under Regulations sections 301.7701-2 and 301.7701-3? <i>If "Yes," complete Schedule R, Part I</i>		X
34	Was the organization related to any tax-exempt or taxable entity? <i>If "Yes," complete Schedule R, Part II, III, or IV, and Part V, line 1</i>		X
35a	Did the organization have a controlled entity within the meaning of section 512(b)(13)?		X
b	If "Yes" to line 35a, did the organization receive any payment from or engage in any transaction with a controlled entity within the meaning of section 512(b)(13)? <i>If "Yes," complete Schedule R, Part V, line 2</i>		
36	Section 501(c)(3) organizations. Did the organization make any transfers to an exempt non-charitable related organization? <i>If "Yes," complete Schedule R, Part V, line 2</i>		X
37	Did the organization conduct more than 5% of its activities through an entity that is not a related organization and that is treated as a partnership for federal income tax purposes? <i>If "Yes," complete Schedule R, Part VI</i>		X
38	Did the organization complete Schedule O and provide explanations on Schedule O for Part VI, lines 11b and 19? Note: All Form 990 filers are required to complete Schedule O.	X	

Part V Statements Regarding Other IRS Filings and Tax Compliance

Check if Schedule O contains a response or note to any line in this Part V

		Yes	No
1a	Enter the number reported in box 3 of Form 1096. Enter -0- if not applicable		
b	Enter the number of Forms W-2G included on line 1a. Enter -0- if not applicable		
c	Did the organization comply with backup withholding rules for reportable payments to vendors and reportable gaming (gambling) winnings to prize winners?		

Part V Statements Regarding Other IRS Filings and Tax Compliance (continued)		Yes	No		
2a	Enter the number of employees reported on Form W-3, Transmittal of Wage and Tax Statements, filed for the calendar year ending with or within the year covered by this return	2a	5		
b	If at least one is reported on line 2a, did the organization file all required federal employment tax returns?	2b		X	
3a	Did the organization have unrelated business gross income of \$1,000 or more during the year?	3a			X
b	If "Yes," has it filed a Form 990-T for this year? If "No" to line 3b, provide an explanation on Schedule O	3b			
4a	At any time during the calendar year, did the organization have an interest in, or a signature or other authority over, a financial account in a foreign country (such as a bank account, securities account, or other financial account)?	4a			X
b	If "Yes," enter the name of the foreign country See instructions for filing requirements for FinCEN Form 114, Report of Foreign Bank and Financial Accounts (FBAR).				
5a	Was the organization a party to a prohibited tax shelter transaction at any time during the tax year?	5a			X
b	Did any taxable party notify the organization that it was or is a party to a prohibited tax shelter transaction?	5b			X
c	If "Yes" to line 5a or 5b, did the organization file Form 8886-T?	5c			
6a	Does the organization have annual gross receipts that are normally greater than \$100,000, and did the organization solicit any contributions that were not tax deductible as charitable contributions?	6a			X
b	If "Yes," did the organization include with every solicitation an express statement that such contributions or gifts were not tax deductible?	6b			
7	Organizations that may receive deductible contributions under section 170(c).				
a	Did the organization receive a payment in excess of \$75 made partly as a contribution and partly for goods and services provided to the payor?	7a			X
b	If "Yes," did the organization notify the donor of the value of the goods or services provided?	7b			
c	Did the organization sell, exchange, or otherwise dispose of tangible personal property for which it was required to file Form 8282?	7c			X
d	If "Yes," indicate the number of Forms 8282 filed during the year	7d			
e	Did the organization receive any funds, directly or indirectly, to pay premiums on a personal benefit contract?	7e			X
f	Did the organization, during the year, pay premiums, directly or indirectly, on a personal benefit contract?	7f			X
g	If the organization received a contribution of qualified intellectual property, did the organization file Form 8899 as required?	7g			
h	If the organization received a contribution of cars, boats, airplanes, or other vehicles, did the organization file a Form 1098-C?	7h			
8	Sponsoring organizations maintaining donor advised funds. Did a donor advised fund maintained by the sponsoring organization have excess business holdings at any time during the year?	8			
9	Sponsoring organizations maintaining donor advised funds.				
a	Did the sponsoring organization make any taxable distributions under section 4966?	9a			
b	Did the sponsoring organization make a distribution to a donor, donor advisor, or related person?	9b			
10	Section 501(c)(7) organizations. Enter:				
a	Initiation fees and capital contributions included on Part VIII, line 12	10a			
b	Gross receipts, included on Form 990, Part VIII, line 12, for public use of club facilities	10b			
11	Section 501(c)(12) organizations. Enter:				
a	Gross income from members or shareholders	11a			
b	Gross income from other sources. (Do not net amounts due or paid to other sources against amounts due or received from them.)	11b			
12a	Section 4947(a)(1) non-exempt charitable trusts. Is the organization filing Form 990 in lieu of Form 1041?	12a			
b	If "Yes," enter the amount of tax-exempt interest received or accrued during the year	12b			
13	Section 501(c)(29) qualified nonprofit health insurance issuers.				
a	Is the organization licensed to issue qualified health plans in more than one state? Note: See the instructions for additional information the organization must report on Schedule O.	13a			
b	Enter the amount of reserves the organization is required to maintain by the states in which the organization is licensed to issue qualified health plans	13b			
c	Enter the amount of reserves on hand	13c			
14a	Did the organization receive any payments for indoor tanning services during the tax year?	14a			X
b	If "Yes," has it filed a Form 720 to report these payments? If "No," provide an explanation on Schedule O	14b			
15	Is the organization subject to the section 4960 tax on payment(s) of more than \$1,000,000 in remuneration or excess parachute payment(s) during the year? If "Yes," see instructions and file Form 4720, Schedule N.	15			X
16	Is the organization an educational institution subject to the section 4968 excise tax on net investment income? If "Yes," complete Form 4720, Schedule O.	16			X
17	Section 501(c)(21) organizations. Did the trust, any disqualified or other person engage in any activities that would result in the imposition of an excise tax under section 4951, 4952 or 4953? If "Yes," complete Form 6069.	17			

Part VI Governance, Management, and Disclosure For each "Yes" response to lines 2 through 7b below, and for a "No" response to line 8a, 8b, or 10b below, describe the circumstances, processes, or changes on Schedule O. See instructions. Check if Schedule O contains a response or note to any line in this Part VI [X]

Section A. Governing Body and Management

Table with 5 columns: Question ID, Question Text, 1a, 9, Yes, No. Rows include questions 1a through 9 regarding governing body members, family relationships, and documentation.

Section B. Policies (This Section B requests information about policies not required by the Internal Revenue Code.)

Table with 5 columns: Question ID, Question Text, Yes, No. Rows include questions 10a through 16b regarding local chapters, conflict of interest policies, whistleblower policies, and compensation review.

Section C. Disclosure

- 17 List the states with which a copy of this Form 990 is required to be filed NONE
18 Section 6104 requires an organization to make its Forms 1023 (1024 or 1024-A, if applicable), 990, and 990-T (section 501(c)(3)s only) available for public inspection. Indicate how you made these available. Check all that apply.
19 Describe on Schedule O whether (and if so, how) the organization made its governing documents, conflict of interest policy, and financial statements available to the public during the tax year.
20 State the name, address, and telephone number of the person who possesses the organization's books and records

CARL ROBERTS
ATKINSON

PO BOX 975

NE 68713

402-925-5786

Part VII Compensation of Officers, Directors, Trustees, Key Employees, Highest Compensated Employees, and Independent Contractors

Check if Schedule O contains a response or note to any line in this Part VII

Section A. Officers, Directors, Trustees, Key Employees, and Highest Compensated Employees

1a Complete this table for all persons required to be listed. Report compensation for the calendar year ending with or within the organization's tax year.

- List all of the organization's **current** officers, directors, trustees (whether individuals or organizations), regardless of amount of compensation. Enter -0- in columns (D), (E), and (F) if no compensation was paid.
- List all of the organization's **current** key employees, if any. See instructions for definition of "key employee."
- List the organization's five **current** highest compensated employees (other than an officer, director, trustee, or key employee) who received reportable compensation (box 5 of Form W-2, box 6 of Form 1099-MISC, and/or box 1 of Form 1099-NEC) of more than \$100,000 from the organization and any related organizations.
- List all of the organization's **former** officers, key employees, and highest compensated employees who received more than \$100,000 of reportable compensation from the organization and any related organizations.
- List all of the organization's **former directors or trustees** that received, in the capacity as a former director or trustee of the organization, more than \$10,000 of reportable compensation from the organization and any related organizations. See the instructions for the order in which to list the persons above.

Check this box if neither the organization nor any related organization compensated any current officer, director, or trustee.

(A) Name and title	(B) Average hours per week (list any hours for related organizations below dotted line)	(C) Position (do not check more than one box, unless person is both an officer and a director/trustee)						(D) Reportable compensation from the organization (W-2/1099-MISC/1099-NEC)	(E) Reportable compensation from related organizations (W-2/1099-MISC/1099-NEC)	(F) Estimated amount of other compensation from the organization and related organizations
		Individual trustee or director	Institutional trustee	Officer	Key employee	Highest compensated employee	Former			
(1) BRIANNA HOFFMAN PRESIDENT	4.00 0.00	X		X				0	0	0
(2) REX BURKHEAD DIRECTOR	0.50 0.00	X						0	0	0
(3) KAREN CARSON DIRECTOR	0.50 0.00	X						0	0	0
(4) BRIDGET DEGRAND DIRECTOR	0.50 0.00	X						0	0	0
(5) SCOTT FANGMAN DIRECTOR	0.50 0.00	X						0	0	0
(6) DR. KARI GALYEN DIRECTOR	0.50 0.00	X						0	0	0
(7) KEN MAXWELL DIRECTOR	0.50 0.00	X						0	0	0
(8) TIFFANY MILLER DIRECTOR	0.50 0.00	X						0	0	0
(9) JANAE SIMARD DIRECTOR	0.50 0.00	X						0	0	0
(10) KYLIE DOCKTER EXECUTIVE DIRECTOR	45.00 0.00			X				84,342	0	8,535
(11)										

Part VIII Statement of Revenue

Check if Schedule O contains a response or note to any line in this Part VIII

				(A) Total revenue	(B) Related or exempt function revenue	(C) Unrelated business revenue	(D) Revenue excluded from tax under sections 512-514	
Contributions, Gifts, Grants and Other Similar Amounts	1a Federated campaigns	1a						
	b Membership dues	1b						
	c Fundraising events	1c	795,538					
	d Related organizations	1d						
	e Government grants (contributions)	1e						
	f All other contributions, gifts, grants, and similar amounts not included above	1f	392,158					
	g Noncash contributions included in lines 1a-1f	1g	\$ 107,455					
	h Total. Add lines 1a-1f			1,187,696				
	Program Service Revenue	2a	Business Code					
b								
c								
d								
e								
f All other program service revenue								
g Total. Add lines 2a-2f								
Other Revenue	3 Investment income (including dividends, interest, and other similar amounts)			17,106			17,106	
	4 Income from investment of tax-exempt bond proceeds							
	5 Royalties							
	6a Gross rents	6a	(i) Real	(ii) Personal				
			b Less: rental expenses	6b				
			c Rental inc. or (loss)	6c				
	d Net rental income or (loss)							
	7a Gross amount from sales of assets other than inventory	7a	(i) Securities	(ii) Other				
			b Less: cost or other basis and sales exps.	7b				
			c Gain or (loss)	7c				
			d Net gain or (loss)					
	8a Gross income from fundraising events (not including \$ 795,538 of contributions reported on line 1c). See Part IV, line 18	8a			82,210			
			b Less: direct expenses	8b	190,197			
			c Net income or (loss) from fundraising events			-107,987		
9a Gross income from gaming activities. See Part IV, line 19	9a			161,000				
		b Less: direct expenses	9b	44,602				
		c Net income or (loss) from gaming activities			116,398		116,398	
10a Gross sales of inventory, less returns and allowances	10a			28,706				
		b Less: cost of goods sold	10b	29,570				
		c Net income or (loss) from sales of inventory			-864	-864		
Miscellaneous Revenue	11a	Business Code						
	b							
	c							
	d All other revenue							
	e Total. Add lines 11a-11d							
12 Total revenue. See instructions				1,212,349	-864	0	133,504	

Part IX Statement of Functional Expenses

Section 501(c)(3) and 501(c)(4) organizations must complete all columns. All other organizations must complete column (A).

Check if Schedule O contains a response or note to any line in this Part IX

Do not include amounts reported on lines 6b, 7b, 8b, 9b, and 10b of Part VIII.

	(A) Total expenses	(B) Program service expenses	(C) Management and general expenses	(D) Fundraising expenses
1 Grants and other assistance to domestic organizations and domestic governments. See Part IV, line 21	959,672	959,672		
2 Grants and other assistance to domestic individuals. See Part IV, line 22				
3 Grants and other assistance to foreign organizations, foreign governments, and foreign individuals. See Part IV, lines 15 and 16				
4 Benefits paid to or for members				
5 Compensation of current officers, directors, trustees, and key employees	84,342	27,124	6,659	50,559
6 Compensation not included above to disqualified persons (as defined under section 4958(f)(1)) and persons described in section 4958(c)(3)(B)				
7 Other salaries and wages	104,906	31,211	1,667	72,028
8 Pension plan accruals and contributions (include section 401(k) and 403(b) employer contributions)	12,910	3,652	1,583	7,675
9 Other employee benefits	6,400		6,400	
10 Payroll taxes	14,662	3,184	1,435	10,043
11 Fees for services (nonemployees):				
a Management				
b Legal				
c Accounting	19,215		19,215	
d Lobbying				
e Professional fundraising services. See Part IV, line 17				
f Investment management fees				
g Other. (If line 11g amount exceeds 10% of line 25, column (A) amount, list line 11g expenses on Schedule O.)				
12 Advertising and promotion	77,675	57,173		20,502
13 Office expenses	15,779	7,173	5,924	2,682
14 Information technology				
15 Royalties				
16 Occupancy	18,120	5,828	10,292	2,000
17 Travel	2,006	1,330	393	283
18 Payments of travel or entertainment expenses for any federal, state, or local public officials				
19 Conferences, conventions, and meetings				
20 Interest				
21 Payments to affiliates				
22 Depreciation, depletion, and amortization	216		216	
23 Insurance	5,316		5,316	
24 Other expenses. Itemize expenses not covered above (List miscellaneous expenses on line 24e. If line 24e amount exceeds 10% of line 25, column (A) amount, list line 24e expenses on Schedule O.)				
a SUBSCRIPTIONS	33,966	5,323	889	27,754
b WEBSITE	10,016	4,626	773	4,617
c CREDIT CARD FEES	6,770	2,993	1,140	2,637
d OTHER	6,740	2,315	3,700	725
e All other expenses	777		598	179
25 Total functional expenses. Add lines 1 through 24e	1,379,488	1,111,604	66,200	201,684
26 Joint costs. Complete this line only if the organization reported in column (B) joint costs from a combined educational campaign and fundraising solicitation. Check here <input type="checkbox"/> if following SOP 98-2 (ASC 958-720)				

Part X Balance Sheet

Check if Schedule O contains a response or note to any line in this Part X

		(A) Beginning of year		(B) End of year
Assets	1	Cash—non-interest-bearing	301,659	1
	2	Savings and temporary cash investments	2,218,485	2
	3	Pledges and grants receivable, net	128,558	3
	4	Accounts receivable, net	15,000	4
	5	Loans and other receivables from any current or former officer, director, trustee, key employee, creator or founder, substantial contributor, or 35% controlled entity or family member of any of these persons		5
	6	Loans and other receivables from other disqualified persons (as defined under section 4958(f)(1)), and persons described in section 4958(c)(3)(B)		6
	7	Notes and loans receivable, net		7
	8	Inventories for sale or use	23,611	8
	9	Prepaid expenses and deferred charges	3,000	9
	10a	Land, buildings, and equipment: cost or other basis. Complete Part VI of Schedule D	7,735	
	10b	Less: accumulated depreciation	7,317	
	10c		634	418
	11	Investments—publicly traded securities	499,692	11
	12	Investments—other securities. See Part IV, line 11		12
	13	Investments—program-related. See Part IV, line 11		13
	14	Intangible assets	33,375	14
15	Other assets. See Part IV, line 11		15	
16	Total assets. Add lines 1 through 15 (must equal line 33)	3,224,014	16	
Liabilities	17	Accounts payable and accrued expenses	15,505	17
	18	Grants payable	821,116	18
	19	Deferred revenue	7,900	19
	20	Tax-exempt bond liabilities		20
	21	Escrow or custodial account liability. Complete Part IV of Schedule D		21
	22	Loans and other payables to any current or former officer, director, trustee, key employee, creator or founder, substantial contributor, or 35% controlled entity or family member of any of these persons		22
	23	Secured mortgages and notes payable to unrelated third parties		23
	24	Unsecured notes and loans payable to unrelated third parties		24
	25	Other liabilities (including federal income tax, payables to related third parties, and other liabilities not included on lines 17-24). Complete Part X of Schedule D		25
	26	Total liabilities. Add lines 17 through 25	844,521	26
Net Assets or Fund Balances	Organizations that follow FASB ASC 958, check here <input checked="" type="checkbox"/> and complete lines 27, 28, 32, and 33.			
	27	Net assets without donor restrictions	2,307,646	27
	28	Net assets with donor restrictions	71,847	28
	Organizations that do not follow FASB ASC 958, check here <input type="checkbox"/> and complete lines 29 through 33.			
	29	Capital stock or trust principal, or current funds		29
	30	Paid-in or capital surplus, or land, building, or equipment fund		30
	31	Retained earnings, endowment, accumulated income, or other funds		31
	32	Total net assets or fund balances	2,379,493	32
33	Total liabilities and net assets/fund balances	3,224,014	33	

Part XI Reconciliation of Net Assets

Check if Schedule O contains a response or note to any line in this Part XI

1	Total revenue (must equal Part VIII, column (A), line 12)	1	1,212,349
2	Total expenses (must equal Part IX, column (A), line 25)	2	1,379,488
3	Revenue less expenses. Subtract line 2 from line 1	3	-167,139
4	Net assets or fund balances at beginning of year (must equal Part X, line 32, column (A))	4	2,379,493
5	Net unrealized gains (losses) on investments	5	-61,339
6	Donated services and use of facilities	6	
7	Investment expenses	7	
8	Prior period adjustments	8	
9	Other changes in net assets or fund balances (explain on Schedule O)	9	
10	Net assets or fund balances at end of year. Combine lines 3 through 9 (must equal Part X, line 32, column (B))	10	2,151,015

Part XII Financial Statements and Reporting

Check if Schedule O contains a response or note to any line in this Part XII

		Yes	No
1	Accounting method used to prepare the Form 990: <input type="checkbox"/> Cash <input checked="" type="checkbox"/> Accrual <input type="checkbox"/> Other If the organization changed its method of accounting from a prior year or checked "Other," explain on Schedule O.		
2a	Were the organization's financial statements compiled or reviewed by an independent accountant? If "Yes," check a box below to indicate whether the financial statements for the year were compiled or reviewed on a separate basis, consolidated basis, or both: <input type="checkbox"/> Separate basis <input type="checkbox"/> Consolidated basis <input type="checkbox"/> Both consolidated and separate basis		X
2b	Were the organization's financial statements audited by an independent accountant? If "Yes," check a box below to indicate whether the financial statements for the year were audited on a separate basis, consolidated basis, or both: <input checked="" type="checkbox"/> Separate basis <input type="checkbox"/> Consolidated basis <input type="checkbox"/> Both consolidated and separate basis	X	
2c	If "Yes" to line 2a or 2b, does the organization have a committee that assumes responsibility for oversight of the audit, review, or compilation of its financial statements and selection of an independent accountant? If the organization changed either its oversight process or selection process during the tax year, explain on Schedule O.	X	
3a	As a result of a federal award, was the organization required to undergo an audit or audits as set forth in the Uniform Guidance, 2 C.F.R. Part 200, Subpart F?		X
3b	If "Yes," did the organization undergo the required audit or audits? If the organization did not undergo the required audit or audits, explain why on Schedule O and describe any steps taken to undergo such audits		

SCHEDULE A
(Form 990)

Public Charity Status and Public Support

OMB No. 1545-0047

Complete if the organization is a section 501(c)(3) organization or a section 4947(a)(1) nonexempt charitable trust.

2022

Department of the Treasury
Internal Revenue Service

Attach to Form 990 or Form 990-EZ.

Open to Public Inspection

Go to www.irs.gov/Form990 for instructions and the latest information.

Name of the organization

TEAM JACK FOUNDATION INC

Employer identification number

46-2301134

Part I Reason for Public Charity Status. (All organizations must complete this part.) See instructions.

The organization is not a private foundation because it is: (For lines 1 through 12, check only one box.)

- 1 A church, convention of churches, or association of churches described in **section 170(b)(1)(A)(i).**
- 2 A school described in **section 170(b)(1)(A)(ii).** (Attach Schedule E (Form 990).)
- 3 A hospital or a cooperative hospital service organization described in **section 170(b)(1)(A)(iii).**
- 4 A medical research organization operated in conjunction with a hospital described in **section 170(b)(1)(A)(iii).** Enter the hospital's name, city, and state:
- 5 An organization operated for the benefit of a college or university owned or operated by a governmental unit described in **section 170(b)(1)(A)(iv).** (Complete Part II.)
- 6 A federal, state, or local government or governmental unit described in **section 170(b)(1)(A)(v).**
- 7 An organization that normally receives a substantial part of its support from a governmental unit or from the general public described in **section 170(b)(1)(A)(vi).** (Complete Part II.)
- 8 A community trust described in **section 170(b)(1)(A)(vi).** (Complete Part II.)
- 9 An agricultural research organization described in **section 170(b)(1)(A)(ix)** operated in conjunction with a land-grant college or university or a non-land-grant college of agriculture (see instructions). Enter the name, city, and state of the college or university:
- 10 An organization that normally receives (1) more than 33 1/3% of its support from contributions, membership fees, and gross receipts from activities related to its exempt functions, subject to certain exceptions; and (2) no more than 33 1/3% of its support from gross investment income and unrelated business taxable income (less section 511 tax) from businesses acquired by the organization after June 30, 1975. See **section 509(a)(2).** (Complete Part III.)
- 11 An organization organized and operated exclusively to test for public safety. See **section 509(a)(4).**
- 12 An organization organized and operated exclusively for the benefit of, to perform the functions of, or to carry out the purposes of one or more publicly supported organizations described in **section 509(a)(1)** or **section 509(a)(2).** See **section 509(a)(3).** Check the box on lines 12a through 12d that describes the type of supporting organization and complete lines 12e, 12f, and 12g.
 - a **Type I.** A supporting organization operated, supervised, or controlled by its supported organization(s), typically by giving the supported organization(s) the power to regularly appoint or elect a majority of the directors or trustees of the supporting organization. **You must complete Part IV, Sections A and B.**
 - b **Type II.** A supporting organization supervised or controlled in connection with its supported organization(s), by having control or management of the supporting organization vested in the same persons that control or manage the supported organization(s). **You must complete Part IV, Sections A and C.**
 - c **Type III functionally integrated.** A supporting organization operated in connection with, and functionally integrated with, its supported organization(s) (see instructions). **You must complete Part IV, Sections A, D, and E.**
 - d **Type III non-functionally integrated.** A supporting organization operated in connection with its supported organization(s) that is not functionally integrated. The organization generally must satisfy a distribution requirement and an attentiveness requirement (see instructions). **You must complete Part IV, Sections A and D, and Part V.**
 - e Check this box if the organization received a written determination from the IRS that it is a Type I, Type II, Type III functionally integrated, or Type III non-functionally integrated supporting organization.
 - f Enter the number of supported organizations
 - g Provide the following information about the supported organization(s).

(i) Name of supported organization	(ii) EIN	(iii) Type of organization (described on lines 1-10 above (see instructions))	(iv) Is the organization listed in your governing document?		(v) Amount of monetary support (see instructions)	(vi) Amount of other support (see instructions)
			Yes	No		
(A)						
(B)						
(C)						
(D)						
(E)						
Total						

Part II Support Schedule for Organizations Described in Sections 170(b)(1)(A)(iv) and 170(b)(1)(A)(vi)

(Complete only if you checked the box on line 5, 7, or 8 of Part I or if the organization failed to qualify under Part III. If the organization fails to qualify under the tests listed below, please complete Part III.)

Section A. Public Support

Calendar year (or fiscal year beginning in)	(a) 2018	(b) 2019	(c) 2020	(d) 2021	(e) 2022	(f) Total
1 Gifts, grants, contributions, and membership fees received. (Do not include any "unusual grants.")	1,208,859	1,013,367	1,338,767	1,151,653	1,187,696	5,900,342
2 Tax revenues levied for the organization's benefit and either paid to or expended on its behalf						
3 The value of services or facilities furnished by a governmental unit to the organization without charge						
4 Total. Add lines 1 through 3	1,208,859	1,013,367	1,338,767	1,151,653	1,187,696	5,900,342
5 The portion of total contributions by each person (other than a governmental unit or publicly supported organization) included on line 1 that exceeds 2% of the amount shown on line 11, column (f)						813,057
6 Public support. Subtract line 5 from line 4						5,087,285

Section B. Total Support

Calendar year (or fiscal year beginning in)	(a) 2018	(b) 2019	(c) 2020	(d) 2021	(e) 2022	(f) Total
7 Amounts from line 4	1,208,859	1,013,367	1,338,767	1,151,653	1,187,696	5,900,342
8 Gross income from interest, dividends, payments received on securities loans, rents, royalties, and income from similar sources	25,815	51,866	38,158	32,710	17,106	165,655
9 Net income from unrelated business activities, whether or not the business is regularly carried on				86,825	115,398	202,223
10 Other income. Do not include gain or loss from the sale of capital assets (Explain in Part VI.)						
11 Total support. Add lines 7 through 10						6,268,220

12 Gross receipts from related activities, etc. (see instructions) 12 178,256

13 **First 5 years.** If the Form 990 is for the organization's first, second, third, fourth, or fifth tax year as a section 501(c)(3) organization, check this box and **stop here**

Section C. Computation of Public Support Percentage

14 Public support percentage for 2022 (line 6, column (f) divided by line 11, column (f))	14	81.16 %
15 Public support percentage from 2021 Schedule A, Part II, line 14	15	81.47 %

16a **33 1/3% support test—2022.** If the organization did not check the box on line 13, and line 14 is 33 1/3% or more, check this box and **stop here.** The organization qualifies as a publicly supported organization

b **33 1/3% support test—2021.** If the organization did not check a box on line 13 or 16a, and line 15 is 33 1/3% or more, check this box and **stop here.** The organization qualifies as a publicly supported organization

17a **10%-facts-and-circumstances test—2022.** If the organization did not check a box on line 13, 16a, or 16b, and line 14 is 10% or more, and if the organization meets the facts-and-circumstances test, check this box and **stop here.** Explain in Part VI how the organization meets the facts-and-circumstances test. The organization qualifies as a publicly supported organization

b **10%-facts-and-circumstances test—2021.** If the organization did not check a box on line 13, 16a, 16b, or 17a, and line 15 is 10% or more, and if the organization meets the facts-and-circumstances test, check this box and **stop here.** Explain in Part VI how the organization meets the facts-and-circumstances test. The organization qualifies as a publicly supported organization

18 **Private foundation.** If the organization did not check a box on line 13, 16a, 16b, 17a, or 17b, check this box and see instructions

Part III Support Schedule for Organizations Described in Section 509(a)(2)

(Complete only if you checked the box on line 10 of Part I or if the organization failed to qualify under Part II. If the organization fails to qualify under the tests listed below, please complete Part II.)

Section A. Public Support

Calendar year (or fiscal year beginning in)	(a) 2018	(b) 2019	(c) 2020	(d) 2021	(e) 2022	(f) Total
1 Gifts, grants, contributions, and membership fees received. (Do not include any "unusual grants.")						
2 Gross receipts from admissions, merchandise sold or services performed, or facilities furnished in any activity that is related to the organization's tax-exempt purpose						
3 Gross receipts from activities that are not an unrelated trade or business under section 513						
4 Tax revenues levied for the organization's benefit and either paid to or expended on its behalf						
5 The value of services or facilities furnished by a governmental unit to the organization without charge						
6 Total. Add lines 1 through 5						
7a Amounts included on lines 1, 2, and 3 received from disqualified persons						
b Amounts included on lines 2 and 3 received from other than disqualified persons that exceed the greater of \$5,000 or 1% of the amount on line 13 for the year						
c Add lines 7a and 7b						
8 Public support. (Subtract line 7c from line 6.)						

Section B. Total Support

Calendar year (or fiscal year beginning in)	(a) 2018	(b) 2019	(c) 2020	(d) 2021	(e) 2022	(f) Total
9 Amounts from line 6						
10a Gross income from interest, dividends, payments received on securities loans, rents, royalties, and income from similar sources						
b Unrelated business taxable income (less section 511 taxes) from businesses acquired after June 30, 1975						
c Add lines 10a and 10b						
11 Net income from unrelated business activities not included on line 10b, whether or not the business is regularly carried on						
12 Other income. Do not include gain or loss from the sale of capital assets (Explain in Part VI.)						
13 Total support. (Add lines 9, 10c, 11, and 12.)						
14 First 5 years. If the Form 990 is for the organization's first, second, third, fourth, or fifth tax year as a section 501(c)(3) organization, check this box and stop here <input type="checkbox"/>						

Section C. Computation of Public Support Percentage

15 Public support percentage for 2022 (line 8, column (f), divided by line 13, column (f))	15	%
16 Public support percentage from 2021 Schedule A, Part III, line 15	16	%

Section D. Computation of Investment Income Percentage

17 Investment income percentage for 2022 (line 10c, column (f), divided by line 13, column (f))	17	%
18 Investment income percentage from 2021 Schedule A, Part III, line 17	18	%

- 19a 33 1/3% support tests—2022.** If the organization did not check the box on line 14, and line 15 is more than 33 1/3%, and line 17 is not more than 33 1/3%, check this box and **stop here.** The organization qualifies as a publicly supported organization
- b 33 1/3% support tests—2021.** If the organization did not check a box on line 14 or line 19a, and line 16 is more than 33 1/3%, and line 18 is not more than 33 1/3%, check this box and **stop here.** The organization qualifies as a publicly supported organization
- 20 Private foundation.** If the organization did not check a box on line 14, 19a, or 19b, check this box and see instructions

Part IV Supporting Organizations

(Complete only if you checked a box on line 12 on Part I. If you checked box 12a, Part I, complete Sections A and B. If you checked box 12b, Part I, complete Sections A and C. If you checked box 12c, Part I, complete Sections A, D, and E. If you checked box 12d, Part I, complete Sections A and D, and complete Part V.)

Section A. All Supporting Organizations

	Yes	No
1 Are all of the organization's supported organizations listed by name in the organization's governing documents? <i>If "No," describe in Part VI how the supported organizations are designated. If designated by class or purpose, describe the designation. If historic and continuing relationship, explain.</i>		
2 Did the organization have any supported organization that does not have an IRS determination of status under section 509(a)(1) or (2)? <i>If "Yes," explain in Part VI how the organization determined that the supported organization was described in section 509(a)(1) or (2).</i>		
3a Did the organization have a supported organization described in section 501(c)(4), (5), or (6)? <i>If "Yes," answer lines 3b and 3c below.</i>		
b Did the organization confirm that each supported organization qualified under section 501(c)(4), (5), or (6) and satisfied the public support tests under section 509(a)(2)? <i>If "Yes," describe in Part VI when and how the organization made the determination.</i>		
c Did the organization ensure that all support to such organizations was used exclusively for section 170(c)(2)(B) purposes? <i>If "Yes," explain in Part VI what controls the organization put in place to ensure such use.</i>		
4a Was any supported organization not organized in the United States ("foreign supported organization")? <i>If "Yes," and if you checked box 12a or 12b in Part I, answer lines 4b and 4c below.</i>		
b Did the organization have ultimate control and discretion in deciding whether to make grants to the foreign supported organization? <i>If "Yes," describe in Part VI how the organization had such control and discretion despite being controlled or supervised by or in connection with its supported organizations.</i>		
c Did the organization support any foreign supported organization that does not have an IRS determination under sections 501(c)(3) and 509(a)(1) or (2)? <i>If "Yes," explain in Part VI what controls the organization used to ensure that all support to the foreign supported organization was used exclusively for section 170(c)(2)(B) purposes.</i>		
5a Did the organization add, substitute, or remove any supported organizations during the tax year? <i>If "Yes," answer lines 5b and 5c below (if applicable). Also, provide detail in Part VI, including (i) the names and EIN numbers of the supported organizations added, substituted, or removed; (ii) the reasons for each such action; (iii) the authority under the organization's organizing document authorizing such action; and (iv) how the action was accomplished (such as by amendment to the organizing document).</i>		
b Type I or Type II only. Was any added or substituted supported organization part of a class already designated in the organization's organizing document?		
c Substitutions only. Was the substitution the result of an event beyond the organization's control?		
6 Did the organization provide support (whether in the form of grants or the provision of services or facilities) to anyone other than (i) its supported organizations, (ii) individuals that are part of the charitable class benefited by one or more of its supported organizations, or (iii) other supporting organizations that also support or benefit one or more of the filing organization's supported organizations? <i>If "Yes," provide detail in Part VI.</i>		
7 Did the organization provide a grant, loan, compensation, or other similar payment to a substantial contributor (as defined in section 4958(c)(3)(C)), a family member of a substantial contributor, or a 35% controlled entity with regard to a substantial contributor? <i>If "Yes," complete Part I of Schedule L (Form 990).</i>		
8 Did the organization make a loan to a disqualified person (as defined in section 4958) not described on line 7? <i>If "Yes," complete Part I of Schedule L (Form 990).</i>		
9a Was the organization controlled directly or indirectly at any time during the tax year by one or more disqualified persons, as defined in section 4946 (other than foundation managers and organizations described in section 509(a)(1) or (2))? <i>If "Yes," provide detail in Part VI.</i>		
b Did one or more disqualified persons (as defined on line 9a) hold a controlling interest in any entity in which the supporting organization had an interest? <i>If "Yes," provide detail in Part VI.</i>		
c Did a disqualified person (as defined on line 9a) have an ownership interest in, or derive any personal benefit from, assets in which the supporting organization also had an interest? <i>If "Yes," provide detail in Part VI.</i>		
10a Was the organization subject to the excess business holdings rules of section 4943 because of section 4943(f) (regarding certain Type II supporting organizations, and all Type III non-functionally integrated supporting organizations)? <i>If "Yes," answer line 10b below.</i>		
b Did the organization have any excess business holdings in the tax year? <i>(Use Schedule C, Form 4720, to determine whether the organization had excess business holdings.)</i>		

Part IV Supporting Organizations (continued)

	Yes	No
11 Has the organization accepted a gift or contribution from any of the following persons?		
a A person who directly or indirectly controls, either alone or together with persons described on lines 11b and 11c below, the governing body of a supported organization?		
11a		
b A family member of a person described on line 11a above?		
11b		
c A 35% controlled entity of a person described on line 11a or 11b above? If "Yes" to line 11a, 11b, or 11c, provide detail in Part VI.		
11c		

Section B. Type I Supporting Organizations

	Yes	No
1 Did the governing body, members of the governing body, officers acting in their official capacity, or membership of one or more supported organizations have the power to regularly appoint or elect at least a majority of the organization's officers, directors, or trustees at all times during the tax year? If "No," describe in Part VI how the supported organization(s) effectively operated, supervised, or controlled the organization's activities. If the organization had more than one supported organization, describe how the powers to appoint and/or remove officers, directors, or trustees were allocated among the supported organizations and what conditions or restrictions, if any, applied to such powers during the tax year.		
1		
2 Did the organization operate for the benefit of any supported organization other than the supported organization(s) that operated, supervised, or controlled the supporting organization? If "Yes," explain in Part VI how providing such benefit carried out the purposes of the supported organization(s) that operated, supervised, or controlled the supporting organization.		
2		

Section C. Type II Supporting Organizations

	Yes	No
1 Were a majority of the organization's directors or trustees during the tax year also a majority of the directors or trustees of each of the organization's supported organization(s)? If "No," describe in Part VI how control or management of the supporting organization was vested in the same persons that controlled or managed the supported organization(s).		
1		

Section D. All Type III Supporting Organizations

	Yes	No
1 Did the organization provide to each of its supported organizations, by the last day of the fifth month of the organization's tax year, (i) a written notice describing the type and amount of support provided during the prior tax year, (ii) a copy of the Form 990 that was most recently filed as of the date of notification, and (iii) copies of the organization's governing documents in effect on the date of notification, to the extent not previously provided?		
1		
2 Were any of the organization's officers, directors, or trustees either (i) appointed or elected by the supported organization(s) or (ii) serving on the governing body of a supported organization? If "No," explain in Part VI how the organization maintained a close and continuous working relationship with the supported organization(s).		
2		
3 By reason of the relationship described on line 2, above, did the organization's supported organizations have a significant voice in the organization's investment policies and in directing the use of the organization's income or assets at all times during the tax year? If "Yes," describe in Part VI the role the organization's supported organizations played in this regard.		
3		

Section E. Type III Functionally Integrated Supporting Organizations

1 Check the box next to the method that the organization used to satisfy the Integral Part Test during the year (see instructions).			
a <input type="checkbox"/> The organization satisfied the Activities Test. Complete line 2 below.			
b <input type="checkbox"/> The organization is the parent of each of its supported organizations. Complete line 3 below.			
c <input type="checkbox"/> The organization supported a governmental entity. Describe in Part VI how you supported a governmental entity (see instructions).			
2 Activities Test. Answer lines 2a and 2b below.			
a Did substantially all of the organization's activities during the tax year directly further the exempt purposes of the supported organization(s) to which the organization was responsive? If "Yes," then in Part VI identify those supported organizations and explain how these activities directly furthered their exempt purposes, how the organization was responsive to those supported organizations, and how the organization determined that these activities constituted substantially all of its activities.		Yes	No
2a			
b Did the activities described on line 2a, above, constitute activities that, but for the organization's involvement, one or more of the organization's supported organization(s) would have been engaged in? If "Yes," explain in Part VI the reasons for the organization's position that its supported organization(s) would have engaged in these activities but for the organization's involvement.			
2b			
3 Parent of Supported Organizations. Answer lines 3a and 3b below.			
a Did the organization have the power to regularly appoint or elect a majority of the officers, directors, or trustees of each of the supported organizations? If "Yes" or "No," provide details in Part VI.			
3a			
b Did the organization exercise a substantial degree of direction over the policies, programs, and activities of each of its supported organizations? If "Yes," describe in Part VI the role played by the organization in this regard.			
3b			

Part V Type III Non-Functionally Integrated 509(a)(3) Supporting Organizations

- 1 Check here if the organization satisfied the Integral Part Test as a qualifying trust on Nov. 20, 1970 (*explain in Part VI*). See instructions. All other Type III non-functionally integrated supporting organizations must complete Sections A through E.

Section A – Adjusted Net Income		(A) Prior Year	(B) Current Year (optional)
1	Net short-term capital gain	1	
2	Recoveries of prior-year distributions	2	
3	Other gross income (see instructions)	3	
4	Add lines 1 through 3.	4	
5	Depreciation and depletion	5	
6	Portion of operating expenses paid or incurred for production or collection of gross income or for management, conservation, or maintenance of property held for production of income (see instructions)	6	
7	Other expenses (see instructions)	7	
8	Adjusted Net Income (subtract lines 5, 6, and 7 from line 4)	8	
Section B – Minimum Asset Amount		(A) Prior Year	(B) Current Year (optional)
1	Aggregate fair market value of all non-exempt-use assets (see instructions for short tax year or assets held for part of year):		
a	Average monthly value of securities	1a	
b	Average monthly cash balances	1b	
c	Fair market value of other non-exempt-use assets	1c	
d	Total (add lines 1a, 1b, and 1c)	1d	
e	Discount claimed for blockage or other factors (<i>explain in detail in Part VI</i>):		
2	Acquisition indebtedness applicable to non-exempt-use assets	2	
3	Subtract line 2 from line 1d.	3	
4	Cash deemed held for exempt use. Enter 0.015 of line 3 (for greater amount, see instructions).	4	
5	Net value of non-exempt-use assets (subtract line 4 from line 3)	5	
6	Multiply line 5 by 0.035.	6	
7	Recoveries of prior-year distributions	7	
8	Minimum Asset Amount (add line 7 to line 6)	8	
Section C – Distributable Amount			Current Year
1	Adjusted net income for prior year (from Section A, line 8, column A)	1	
2	Enter 0.85 of line 1.	2	
3	Minimum asset amount for prior year (from Section B, line 8, column A)	3	
4	Enter greater of line 2 or line 3.	4	
5	Income tax imposed in prior year	5	
6	Distributable Amount. Subtract line 5 from line 4, unless subject to emergency temporary reduction (see instructions).	6	
7	<input type="checkbox"/> Check here if the current year is the organization's first as a non-functionally integrated Type III supporting organization (see instructions).		

Part V Type III Non-Functionally Integrated 509(a)(3) Supporting Organizations (continued)

Section D – Distributions	Current Year
1 Amounts paid to supported organizations to accomplish exempt purposes	1
2 Amounts paid to perform activity that directly furthers exempt purposes of supported organizations, in excess of income from activity	2
3 Administrative expenses paid to accomplish exempt purposes of supported organizations	3
4 Amounts paid to acquire exempt-use assets	4
5 Qualified set-aside amounts (prior IRS approval required—provide details in Part VI)	5
6 Other distributions (describe in Part VI). See instructions.	6
7 Total annual distributions. Add lines 1 through 6.	7
8 Distributions to attentive supported organizations to which the organization is responsive (provide details in Part VI). See instructions.	8
9 Distributable amount for 2022 from Section C, line 6	9
10 Line 8 amount divided by line 9 amount	10

Section E – Distribution Allocations (see instructions)	(i) Excess Distributions	(ii) Underdistributions Pre-2022	(iii) Distributable Amount for 2022
1 Distributable amount for 2022 from Section C, line 6			
2 Underdistributions, if any, for years prior to 2022 (reasonable cause required—explain in Part VI). See instructions.			
3 Excess distributions carryover, if any, to 2022			
a From 2017			
b From 2018			
c From 2019			
d From 2020			
e From 2021			
f Total of lines 3a through 3e			
g Applied to underdistributions of prior years			
h Applied to 2022 distributable amount			
i Carryover from 2017 not applied (see instructions)			
j Remainder. Subtract lines 3g, 3h, and 3i from line 3f.			
4 Distributions for 2022 from Section D, line 7: \$			
a Applied to underdistributions of prior years			
b Applied to 2022 distributable amount			
c Remainder. Subtract lines 4a and 4b from line 4.			
5 Remaining underdistributions for years prior to 2022, if any. Subtract lines 3g and 4a from line 2. For result greater than zero, explain in Part VI. See instructions.			
6 Remaining underdistributions for 2022. Subtract lines 3h and 4b from line 1. For result greater than zero, explain in Part VI. See instructions.			
7 Excess distributions carryover to 2023. Add lines 3j and 4c.			
8 Breakdown of line 7:			
a Excess from 2018			
b Excess from 2019			
c Excess from 2020			
d Excess from 2021			
e Excess from 2022			

Part VI **Supplemental Information.** Provide the explanations required by Part II, line 10; Part II, line 17a or 17b; Part III, line 12; Part IV, Section A, lines 1, 2, 3b, 3c, 4b, 4c, 5a, 6, 9a, 9b, 9c, 11a, 11b, and 11c; Part IV, Section B, lines 1 and 2; Part IV, Section C, line 1; Part IV, Section D, lines 2 and 3; Part IV, Section E, lines 1c, 2a, 2b, 3a, and 3b; Part V, line 1; Part V, Section B, line 1e; Part V, Section D, lines 5, 6, and 8; and Part V, Section E, lines 2, 5, and 6. Also complete this part for any additional information. (See instructions.)

COPY

Name of organization

TEAM JACK FOUNDATION INC

Employer identification number

46-2301134

Part II Noncash Property (see instructions). Use duplicate copies of Part II if additional space is needed.

(a) No. from Part I	(b) Description of noncash property given	(c) FMV (or estimate) (See instructions.)	(d) Date received
4	1973 CORVETTE STINGRAY	\$ 30,000	05/11/22

SCHEDULE D (Form 990)

Department of the Treasury Internal Revenue Service

Supplemental Financial Statements

Complete if the organization answered "Yes" on Form 990, Part IV, line 6, 7, 8, 9, 10, 11a, 11b, 11c, 11d, 11e, 11f, 12a, or 12b. Attach to Form 990.

Go to www.irs.gov/Form990 for instructions and the latest information.

OMB No. 1545-0047

2022

Open to Public Inspection

Name of the organization

TEAM JACK FOUNDATION INC

Employer identification number

46-2301134

Part I Organizations Maintaining Donor Advised Funds or Other Similar Funds or Accounts.

Complete if the organization answered "Yes" on Form 990, Part IV, line 6.

Table with 3 columns: Question, (a) Donor advised funds, (b) Funds and other accounts. Rows include total number at end of year, aggregate value of contributions, aggregate value of grants, and questions about donor advisement.

Part II Conservation Easements.

Complete if the organization answered "Yes" on Form 990, Part IV, line 7.

Table with 3 columns: Question, (a) Donor advised funds, (b) Funds and other accounts. Rows include purpose of conservation easements, total number of easements, and questions about monitoring and reporting.

Part III Organizations Maintaining Collections of Art, Historical Treasures, or Other Similar Assets.

Complete if the organization answered "Yes" on Form 990, Part IV, line 8.

Table with 3 columns: Question, (a) Donor advised funds, (b) Funds and other accounts. Rows include questions about reporting art and historical treasures.

Part III Organizations Maintaining Collections of Art, Historical Treasures, or Other Similar Assets (continued)

- 3 Using the organization's acquisition, accession, and other records, check any of the following that make significant use of its collection items (check all that apply):
- a Public exhibition
 - b Scholarly research
 - c Preservation for future generations
 - d Loan or exchange program
 - e Other
- 4 Provide a description of the organization's collections and explain how they further the organization's exempt purpose in Part XIII.
- 5 During the year, did the organization solicit or receive donations of art, historical treasures, or other similar assets to be sold to raise funds rather than to be maintained as part of the organization's collection? Yes No

Part IV Escrow and Custodial Arrangements.

Complete if the organization answered "Yes" on Form 990, Part IV, line 9, or reported an amount on Form 990, Part X, line 21.

- 1a Is the organization an agent, trustee, custodian or other intermediary for contributions or other assets not included on Form 990, Part X? Yes No
- b If "Yes," explain the arrangement in Part XIII and complete the following table:
- | | Amount |
|---------------------------------|--------|
| c Beginning balance | 1c |
| d Additions during the year | 1d |
| e Distributions during the year | 1e |
| f Ending balance | 1f |
- 2a Did the organization include an amount on Form 990, Part X, line 21, for escrow or custodial account liability? Yes No
- b If "Yes," explain the arrangement in Part XIII. Check here if the explanation has been provided on Part XIII Yes No

Part V Endowment Funds.

Complete if the organization answered "Yes" on Form 990, Part IV, line 10.

	(a) Current year	(b) Prior year	(c) Two years back	(d) Three years back	(e) Four years back
1a Beginning of year balance					
b Contributions					
c Net investment earnings, gains, and losses					
d Grants or scholarships					
e Other expenditures for facilities and programs					
f Administrative expenses					
g End of year balance					

- 2 Provide the estimated percentage of the current year end balance (line 1g, column (a)) held as:
- a Board designated or quasi-endowment %
 - b Permanent endowment %
 - c Term endowment %
- The percentages on lines 2a, 2b, and 2c should equal 100%.
- 3a Are there endowment funds not in the possession of the organization that are held and administered for the organization by:
- | | Yes | No |
|-----------------------------|--------|----|
| (i) Unrelated organizations | 3a(i) | |
| (ii) Related organizations | 3a(ii) | |
- b If "Yes" on line 3a(ii), are the related organizations listed as required on Schedule R? Yes No
- 4 Describe in Part XIII the intended uses of the organization's endowment funds.

Part VI Land, Buildings, and Equipment.

Complete if the organization answered "Yes" on Form 990, Part IV, line 11a. See Form 990, Part X, line 10.

Description of property	(a) Cost or other basis (investment)	(b) Cost or other basis (other)	(c) Accumulated depreciation	(d) Book value
1a Land				
b Buildings				
c Leasehold improvements				
d Equipment	7,735		7,317	418
e Other				
Total. Add lines 1a through 1e. (Column (d) must equal Form 990, Part X, column (B), line 10c.)				418

Part VII Investments – Other Securities.

Complete if the organization answered "Yes" on Form 990, Part IV, line 11b. See Form 990, Part X, line 12.

(a) Description of security or category (including name of security)	(b) Book value	(c) Method of valuation: Cost or end-of-year market value
(1) Financial derivatives		
(2) Closely held equity interests		
(3) Other		
(A)		
(B)		
(C)		
(D)		
(E)		
(F)		
(G)		
(H)		
Total. (Column (b) must equal Form 990, Part X, col. (B) line 12.)		

Part VIII Investments – Program Related.

Complete if the organization answered "Yes" on Form 990, Part IV, line 11c. See Form 990, Part X, line 13.

(a) Description of investment	(b) Book value	(c) Method of valuation: Cost or end-of-year market value
(1)		
(2)		
(3)		
(4)		
(5)		
(6)		
(7)		
(8)		
(9)		
Total. (Column (b) must equal Form 990, Part X, col. (B) line 13.)		

Part IX Other Assets.

Complete if the organization answered "Yes" on Form 990, Part IV, line 11d. See Form 990, Part X, line 15.

(a) Description	(b) Book value
(1)	
(2)	
(3)	
(4)	
(5)	
(6)	
(7)	
(8)	
(9)	
Total. (Column (b) must equal Form 990, Part X, col. (B) line 15.)	

Part X Other Liabilities.

Complete if the organization answered "Yes" on Form 990, Part IV, line 11e or 11f. See Form 990, Part X, line 25.

1. (a) Description of liability	(b) Book value
(1) Federal income taxes	
(2) LEASE LIABILITY	23,079
(3)	
(4)	
(5)	
(6)	
(7)	
(8)	
(9)	
Total. (Column (b) must equal Form 990, Part X, col. (B) line 25.)	23,079

2. Liability for uncertain tax positions. In Part XIII, provide the text of the footnote to the organization's financial statements that reports the organization's liability for uncertain tax positions under FASB ASC 740. Check here if the text of the footnote has been provided in Part XIII

Part XI Reconciliation of Revenue per Audited Financial Statements With Revenue per Return.

Complete if the organization answered "Yes" on Form 990, Part IV, line 12a.

1	Total revenue, gains, and other support per audited financial statements		1	1,255,535
2	Amounts included on line 1 but not on Form 990, Part VIII, line 12:			
a	Net unrealized gains (losses) on investments	2a	-61,339	
b	Donated services and use of facilities	2b		
c	Recoveries of prior year grants	2c		
d	Other (Describe in Part XIII.)	2d	104,525	
e	Add lines 2a through 2d		2e	43,186
3	Subtract line 2e from line 1		3	1,212,349
4	Amounts included on Form 990, Part VIII, line 12, but not on line 1:			
a	Investment expenses not included on Form 990, Part VIII, line 7b	4a		
b	Other (Describe in Part XIII.)	4b		
c	Add lines 4a and 4b		4c	
5	Total revenue. Add lines 3 and 4c . (This must equal Form 990, Part I, line 12.)		5	1,212,349

Part XII Reconciliation of Expenses per Audited Financial Statements With Expenses per Return.

Complete if the organization answered "Yes" on Form 990, Part IV, line 12a.

1	Total expenses and losses per audited financial statements		1	1,484,013
2	Amounts included on line 1 but not on Form 990, Part IX, line 25:			
a	Donated services and use of facilities	2a		
b	Prior year adjustments	2b		
c	Other losses	2c		
d	Other (Describe in Part XIII.)	2d	104,525	
e	Add lines 2a through 2d		2e	104,525
3	Subtract line 2e from line 1		3	1,379,488
4	Amounts included on Form 990, Part IX, line 25, but not on line 1:			
a	Investment expenses not included on Form 990, Part VIII, line 7b	4a		
b	Other (Describe in Part XIII.)	4b		
c	Add lines 4a and 4b		4c	
5	Total expenses. Add lines 3 and 4c . (This must equal Form 990, Part I, line 18.)		5	1,379,488

Part XIII Supplemental Information.

Provide the descriptions required for Part II, lines 3, 5, and 9; Part III, lines 1a and 4; Part IV, lines 1b and 2b; Part V, line 4; Part X, line 2; Part XI, lines 2d and 4b; and Part XII, lines 2d and 4b. Also complete this part to provide any additional information.

PART XI, LINE 2D - REVENUE AMOUNTS INCLUDED IN FINANCIALS - OTHER

OTHER EVENT EXPENSE NETTED WITH INCOME ON TAX RETURN \$ **104,525**

PART XII, LINE 2D - EXPENSE AMOUNTS INCLUDED IN FINANCIALS - OTHER

DIRECT FUNDRAISING EVENT EXPENSES \$ **104,525**

Part XIII Supplemental Information *(continued)*

COPY

**SCHEDULE G
(Form 990)**

Department of the Treasury
Internal Revenue Service

Name of the organization

Supplemental Information Regarding Fundraising or Gaming Activities

Complete if the organization answered "Yes" on Form 990, Part IV, line 17, 18, or 19, or if the organization entered more than \$15,000 on Form 990-EZ, line 6a.

▶ Attach to Form 990 or Form 990-EZ.

▶ Go to www.irs.gov/Form990 for instructions and the latest information.

OMB No. 1545-0047

2022

Open to Public Inspection

TEAM JACK FOUNDATION INC

Employer identification number

46-2301134

Part I Fundraising Activities. Complete if the organization answered "Yes" on Form 990, Part IV, line 17. Form 990-EZ filers are not required to complete this part.

1 Indicate whether the organization raised funds through any of the following activities. Check all that apply.

- a Mail solicitations
- b Internet and email solicitations
- c Phone solicitations
- d In-person solicitations
- e Solicitation of non-government grants
- f Solicitation of government grants
- g Special fundraising events

2a Did the organization have a written or oral agreement with any individual (including officers, directors, trustees, or key employees listed in Form 990, Part VII) or entity in connection with professional fundraising services? Yes No

b If "Yes," list the 10 highest paid individuals or entities (fundraisers) pursuant to agreements under which the fundraiser is to be compensated at least \$5,000 by the organization.

	(i) Name and address of individual or entity (fundraiser)	(ii) Activity	(iii) Did fundraiser have custody or control of contributions?		(iv) Gross receipts from activity	(v) Amount paid to (or retained by) fundraiser listed in col. (i)	(vi) Amount paid to (or retained by) organization
			Yes	No			
1							
2							
3							
4							
5							
6							
7							
8							
9							
10							
Total							

3 List all states in which the organization is registered or licensed to solicit contributions or has been notified it is exempt from registration or licensing.

.....

.....

.....

.....

.....

Part II Fundraising Events. Complete if the organization answered "Yes" on Form 990, Part IV, line 18, or reported more than \$15,000 of fundraising event contributions and gross income on Form 990-EZ, lines 1 and 6b. List events with gross receipts greater than \$5,000.

		(a) Event #1	(b) Event #2	(c) Other events	(d) Total events	
		<u>GALA</u> (event type)	<u>RADIOTHON</u> (event type)	<u>4</u> (total number)	(add col. (a) through col. (c))	
Revenue	1	Gross receipts	594,127	102,395	181,226	877,748
	2	Less: Contributions	550,182	102,395	142,961	795,538
	3	Gross income (line 1 minus line 2)	43,945		38,265	82,210
Direct Expenses	4	Cash prizes			2,586	2,586
	5	Noncash prizes				
	6	Rent/facility costs			2,984	2,984
	7	Food and beverages	24,611			24,611
	8	Entertainment	51,400			51,400
	9	Other direct expenses	43,228	14,215	51,173	108,616
	10	Direct expense summary. Add lines 4 through 9 in column (d)				
11	Net income summary. Subtract line 10 from line 3, column (d)					-107,987

Part III Gaming. Complete if the organization answered "Yes" on Form 990, Part IV, line 19, or reported more than \$15,000 on Form 990-EZ, line 6a.

		(a) Bingo	(b) Pull tabs/instant bingo/progressive bingo	(c) Other gaming	(d) Total gaming (add col. (a) through col. (c))	
		1	Gross revenue			161,000
Direct Expenses	2	Cash prizes			6,809	6,809
	3	Noncash prizes			30,000	30,000
	4	Rent/facility costs				
	5	Other direct expenses			7,793	7,793
	6	Volunteer labor	<input type="checkbox"/> Yes <input checked="" type="checkbox"/> No	<input type="checkbox"/> Yes <input checked="" type="checkbox"/> No	<input checked="" type="checkbox"/> Yes <input type="checkbox"/> No 85.00 %	
7	Direct expense summary. Add lines 2 through 5 in column (d)					44,602
8	Net gaming income summary. Subtract line 7 from line 1, column (d)					116,398

- 9 Enter the state(s) in which the organization conducts gaming activities: **NE**
- a Is the organization licensed to conduct gaming activities in each of these states? Yes No
- b If "No," explain:
- 10a Were any of the organization's gaming licenses revoked, suspended, or terminated during the tax year? Yes No
- b If "Yes," explain:

- 11 Does the organization conduct gaming activities with nonmembers? Yes No
- 12 Is the organization a grantor, beneficiary or trustee of a trust, or a member of a partnership or other entity formed to administer charitable gaming? Yes No
- 13 Indicate the percentage of gaming activity conducted in:

a	The organization's facility	13a	80.00 %
b	An outside facility	13b	20.00 %

14 Enter the name and address of the person who prepares the organization's gaming/special events books and records:

Name KYLIE DOCKTER

47640 E HWY 20 STE 2

Address ATKINSON NE 68713

- 15a Does the organization have a contract with a third party from whom the organization receives gaming revenue? Yes No
- b If "Yes," enter the amount of gaming revenue received by the organization \$ _____ and the amount of gaming revenue retained by the third party \$ _____
- c If "Yes," enter name and address of the third party:

Name _____

Address _____

16 Gaming manager information:

Name KYLIE DOCKTER

Gaming manager compensation \$ _____

Description of services provided SUPERVISES RAFFLES OPERATIONS

Director/officer Employee Independent contractor

- 17 Mandatory distributions:
 - a Is the organization required under state law to make charitable distributions from the gaming proceeds to retain the state gaming license? Yes No
 - b Enter the amount of distributions required under state law to be distributed to other exempt organizations or spent in the organization's own exempt activities during the tax year \$ 117,055

Part IV Supplemental Information. Provide the explanations required by Part I, line 2b, columns (iii) and (v); and Part III, lines 9, 9b, 10b, 15b, 15c, 16, and 17b, as applicable. Also provide any additional information. See instructions.

SCH G, PART III, LINE 17B - REQUIRED DISTRIBUTIONS PER STATE LAW	
STATE	DISTRIBUTION AMOUNT
NEBRASKA	\$ 117,055

**SCHEDULE I
(Form 990)**

**Grants and Other Assistance to Organizations,
Governments, and Individuals in the United States**
Complete if the organization answered "Yes" on Form 990, Part IV, line 21 or 22.
Attach to Form 990.
Go to www.irs.gov/Form990 for the latest information.

OMB No. 1545-0047

2022

**Open to Public
Inspection**

Department of the Treasury
Internal Revenue Service

Name of the organization

TEAM JACK FOUNDATION INC

Employer identification number

46-2301134

Part I General Information on Grants and Assistance

- 1 Does the organization maintain records to substantiate the amount of the grants or assistance, the grantees' eligibility for the grants or assistance, and the selection criteria used to award the grants or assistance? Yes No
- 2 Describe in Part IV the organization's procedures for monitoring the use of grant funds in the United States.

Part II Grants and Other Assistance to Domestic Organizations and Domestic Governments. Complete if the organization answered "Yes" on Form 990, Part IV, line 21, for any recipient that received more than \$5,000. Part II can be duplicated if additional space is needed.

1	(a) Name and address of organization or government	(b) EIN	(c) IRC section (if applicable)	(d) Amount of cash grant	(e) Amount of noncash assistance	(f) Method of valuation (book, FMV, appraisal, other)	(g) Description of noncash assistance	(h) Purpose of grant or assistance
(1)	LURIE CHILDREN'S HOSPITAL 225 E CHICAGO AVE CHICAGO IL 60611-2991	36-2170833	501C3	100,000		CASH		RESEARCH
(2)	COLUMBIA UNIV IRVING MEDICAL CENTER 615 WEST 131ST STREET NEW YORK NY 10027	13-5598093	501C3	250,000		CASH		RESEARCH
(3)	UNIV OF NE MEDICAL CENTER 985950 NE MEDICAL CENTER OMAHA NE 68198	47-0049123	501C3	250,000		CASH		PROGAM SUPPORT
(4)	UNIV OF NE FOUNDATION 1010 LINCOLN MALL LINCOLN NE 68508	47-0379839	501C3	105,658		CASH		RESEACH
(5)								
(6)								
(7)								
(8)								
(9)								

- 2 Enter total number of section 501(c)(3) and government organizations listed in the line 1 table ▶ 4
- 3 Enter total number of other organizations listed in the line 1 table ▶ 0

For Paperwork Reduction Act Notice, see the Instructions for Form 990.

Schedule I (Form 990) (2022)

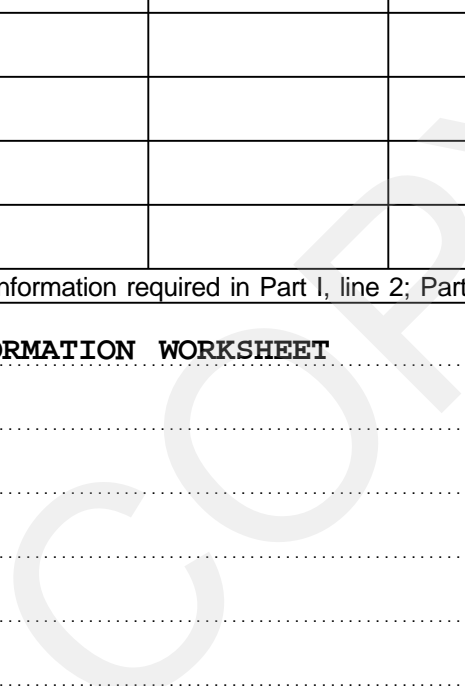
Part III Grants and Other Assistance to Domestic Individuals. Complete if the organization answered "Yes" on Form 990, Part IV, line 22.

Part III can be duplicated if additional space is needed.

(a) Type of grant or assistance	(b) Number of recipients	(c) Amount of cash grant	(d) Amount of noncash assistance	(e) Method of valuation (book, FMV, appraisal, other)	(f) Description of noncash assistance
1					
2					
3					
4					
5					
6					
7					

Part IV Supplemental Information. Provide the information required in Part I, line 2; Part III, column (b); and any other additional information.

SEE SCHEDULE I SUPPLEMENTAL INFORMATION WORKSHEET



**SCHEDULE I
(Form 990)**

Supplemental Information

2022

For calendar year 2022, or tax year beginning , and ending

Name of the organization

TEAM JACK FOUNDATION INC

Employer identification number

46-2301134

PART I, LINE 2 - PROCEDURES FOR MONITORING THE USE OF GRANT FUNDS

ALL RESEARCH GRANTS ARE REVIEWED BY AN INTERNAL SCIENTIFIC ADVISORY COMMITTEE AND THEN REVIEWED BY A NATIONAL SCIENTIFIC ADVISORY BOARD TO EVALUATE SEVERAL CRITERIA, INCLUDING BUT NOT LIMITED TO, SCIENTIFIC MERIT, BACKGROUND OF RESEARCHERS, SUPPORTING INSTITUTIONS, PROPOSED RESEARCH AND MORE. IF A GRANT IS AWARDED, RECIPIENTS MUST PROVIDE PERIODIC REPORTS AND A FINAL REPORT BEFORE PAYMENTS ARE MADE.

POWER 5 CHILDHOOD BRAIN TUMOR INITIATIVE GRANTS ARE REVIEWED BY THIRD PARTY REVIEW BOARD CONSISTING OF ADVISORS OUTSIDE OF THE UNIVERSITY OF NEBRASKA MEDICAL CENTER AND CHILDREN'S HOSPITAL. EACH GRANT IS PEER REVIEWED AND THEN REQUIRES FINAL APPROVAL FROM THE TEAM JACK FOUNDATION BOARD OF DIRECTORS. IF GRANT IS AWARDED, RECIPIENTS ARE REQUIRED TO FOLLOW THE SAME REPORTING AS OTHER TEAM JACK SPONSORED GRANTS.

REPORTS FROM RECIPIENTS ARE REVIEWED BY THE PRESIDENT AND EXECUTIVE DIRECTOR AS WELL AS THE BOARD OF DIRECTORS BEFORE SUBMITTING NEXT PAYMENTS.

PART IV - ADDITIONAL INFORMATION

PART II

GRANTS ARE RECORDED AS EXPENSES WHEN THE FUNDS ARE COMMITTED. THEREFORE THE AMOUNTS REPORTED AS GRANT EXPENSE OF \$959,672 IS DIFFERENT THAN THE CASH GRANTS PAID DURING THE YEAR.

PART II, COLUMN (H) PURPOSE OF GRANTS

ADDITIONAL PROJECT INFORMATION

ANN & ROBERT H. LURIE CHILDREN'S HOSPITAL OF CHICAGO:

IN 2020, THE TEAM JACK FOUNDATION COMMITTED \$325,000 TO DR. ASHLEY PLANT-

SCHEDULE I
(Form 990)

Supplemental Information

2022

For calendar year 2022, or tax year beginning , and ending

Name of the organization

TEAM JACK FOUNDATION INC

Employer identification number

46-2301134

FOX AT LURIE CHILDREN'S HOSPITAL TO STUDY A HEAT SHOCK PROTEIN (HSP) NEO-ANTIGEN VACCINE PLUS CHECKPOINT BLOCKADE FOR DIFFUSE INTRINSIC PONTINE GLIOMA (DIPG), THE DEADLIEST FORM OF CHILDHOOD BRAIN CANCER. THE CLINICAL TRIAL OFFICIALLY OPENED AND BEGAN ENROLLING PATIENTS IN JANUARY 2022. THIS TRIAL IS ONGOING AND HAS ATTRACTED PATIENTS FROM ALL OVER THE UNITED STATES AND THEY HAVE SCREENED OVER 35 PATIENTS FOR ELIGIBILITY. PHILANTHROPIC SUPPORT FROM THE TEAM JACK FOUNDATION HAS MADE IT POSSIBLE FOR FAMILIES TO TRAVEL TO GAIN ACCESS TO THIS NOVEL CLINICAL TRIAL. TO DATE, THE TRIAL HAS ENROLLED THREE PATIENTS AND ANTICIPATES COMPLETION OF THE FIRST ARM OF THIS STUDY BY EARLY FALL 2023. SUBJECTS HAVE TOLERATED THE VACCINE WELL AND BIOLOGIC CORRELATES HAVE SHOWN ROBUST IMMUNE RESPONSE IN THE BLOOD. CLINICAL RESPONSE ASSESSMENTS ARE STILL ON-GOING.

COLUMBIA UNIVERSITY IRVING MEDICAL CENTER:

A \$250,000 AWARD BY THE TEAM JACK FOUNDATION TO DR. JOVANA PAVISIC AT COLUMBIA UNIVERSITY IRVING MEDICAL CENTER WILL ALLOW HER TO STUDY AND IDENTIFY NEW TREATMENT STRATEGIES FOR DIFFUSE MIDLINE GLIOMA (DMG), A DEADLY CHILDHOOD BRAIN TUMOR FOR WHICH NO CURATIVE TREATMENTS EXIST TO DATE. THE AWARD WILL SUPPORT THE USE OF SINGLE CELL TECHNOLOGIES AND INNOVATIVE COMPUTATIONAL ALGORITHMS TO STUDY THE EXPRESSION OF GENES IN INDIVIDUAL DMG TUMOR CELLS. THIS WILL IDENTIFY KEY MOLECULAR DRIVERS CALLED MASTER REGULATORS IN DISTINCT TUMOR CELL STATES WITHIN DMG, AND THE DRUGS THAT SHUT DOWN THEIR EFFECTS. THIS WILL EXPAND OUR UNDERSTANDING OF THE HETEROGENEITY OF DMG TUMORS WITH THE GOAL OF IDENTIFYING PROMISING DRUG COMBINATIONS TARGETING THE ENTIRE TUMOR COMPARTMENT FOR CLINICAL TESTING.

**SCHEDULE I
(Form 990)**

Supplemental Information

2022

For calendar year 2022, or tax year beginning , and ending

Name of the organization

TEAM JACK FOUNDATION INC

Employer identification number

46-2301134

NEBRASKA BRAIN TUMOR PROGRAM UPDATE

IN 2015, THE TEAM JACK FOUNDATION COMMITTED \$1.5 MILLION TO UNMC FOR THE DEVELOPMENT OF A CHILDHOOD BRAIN TUMOR PROGRAM. PART OF THIS PROGRAM INCLUDES THE HIRING OF SPECIALISTS TO TREAT CHILDREN DIAGNOSED WITH BRAIN TUMORS. THE FOUNDATION COMMITTED AN ADDITIONAL \$5 MILLION TO SUPPORT RESEARCH, PAIN MANAGEMENT IN CANCER AND EDUCATION. IN 2022, THE FOLLOWING GRANTS WERE AWARDED THROUGH THIS PROGRAM:

"TO COMPLETE THE TEAM OF PHYSICIANS NECESSARY TO TREAT KIDS WITH BRAIN TUMORS, A PEDIATRIC NEURO-ONCOLOGIST IS CRITICAL TO ENSURE ACCESS TO ADVANCED CARE AND CLINICAL TRIALS. UNMC HAS SUCCESSFULLY FILLED THIS GAP WITH THE HELP OF A \$10,000 AWARD TO DR. CHITTALSINH RAULJI FOR INTENSIVE PROGRAM TRAINING IN DENVER, CO. DR. RAULJI WILL HELP TRANSLATE THE DISCOVERIES IN THE LABORATORY TO CLINICAL TRIALS WHICH WILL MAKE MORE TREATMENT OPTIONS AVAILABLE FOR CHILDREN WITH BRAIN TUMORS.

"DR. SIDHARTH MAHAPATRA WAS AWARDED A \$226,350 GRANT FOR THE DEVELOPMENT OF A REGIONAL MEDULLOBLASTOMA CORE FACILITY AT THE UNIVERSITY OF NEBRASKA MEDICAL CENTER. THE MEDULLOBLASTOMA CORE FACILITY AIMS TO LEVERAGE CURRENT TECHNOLOGIES AND INFRASTRUCTURE AT THE FRED AND PAMELA BUFFET CANCER CENTER TO ACCOMPLISH TWO MAIN OBJECTIVES: 1. O GENERATE A BIOREPOSITORY OF WELL-CHARACTERIZED MEDULLOBLASTOMA TUMOR TISSUES, WHICH WILL BE THE FIRST OF ITS KIND IN THE STATE OF NEBRASKA, AND 2. TO GENERATE VARIOUS PRE-CLINICAL MODELS OF MEDULLOBLASTOMA FOR TESTING NOVEL THERAPEUTICS. THIS UNIQUE APPROACH OF COMBINING BENCH AND BEDSIDE INVESTIGATIONS WILL NOT ONLY ADD TO THE CURRENT UNDERSTANDING OF MEDULLOBLASTOMAS BUT ALSO HAS THE

**SCHEDULE I
(Form 990)**

Supplemental Information

2022

For calendar year 2022, or tax year beginning , and ending

Name of the organization

TEAM JACK FOUNDATION INC

Employer identification number

46-2301134

POTENTIAL TO PROVIDE DIRECT BENEFIT TO CHILDREN RECEIVING THERAPY.

"DR. CHI ZHANG WAS AWARDED A \$330,151 GRANT FOR PRECLINICAL STUDIES ON
PEDIATRIC HIGH-GRADE GLIOMA WITH A NANOFORMULATION OF METFORMIN (P4-MET) AS
A RADIOSENSITIZER.

COPY

**SCHEDULE M
(Form 990)**

Noncash Contributions

OMB No. 1545-0047

Complete if the organizations answered "Yes" on Form 990, Part IV, lines 29 or 30.

Attach to Form 990.

Go to www.irs.gov/Form990 for instructions and the latest information.

2022

**Open To Public
Inspection**

Department of the Treasury
Internal Revenue Service

Name of the organization

TEAM JACK FOUNDATION INC

Employer identification number

46-2301134

Part I Types of Property

	(a) Check if applicable	(b) Number of contributions or items contributed	(c) Noncash contribution amounts reported on Form 990, Part VIII, line 1g	(d) Method of determining noncash contribution amounts
1 Art — Works of art				
2 Art — Historical treasures				
3 Art — Fractional interests				
4 Books and publications				
5 Clothing and household goods				
6 Cars and other vehicles	X	1	30,000	APPRAISAL
7 Boats and planes				
8 Intellectual property				
9 Securities — Publicly traded				
10 Securities — Closely held stock				
11 Securities — Partnership, LLC, or trust interests				
12 Securities — Miscellaneous				
13 Qualified conservation contribution — Historic structures				
14 Qualified conservation contribution — Other				
15 Real estate — Residential				
16 Real estate — Commercial				
17 Real estate — Other				
18 Collectibles	X	55	21,793	ESTIMATED COST OF ITEM
19 Food inventory				
20 Drugs and medical supplies				
21 Taxidermy				
22 Historical artifacts				
23 Scientific specimens				
24 Archeological artifacts				
25 Other (REC/TRIPS)	X	19	31,370	ESTIMATED VALUE DONOR
26 Other (OTHER)	X	26	4,011	ESTIMATED RETAIL
27 Other (GIFT BASKETS ET)	X	81	7,601	ESTIMATED RETAIL
28 Other (TICKETS/ REC)	X	28	12,680	FACE VALUE

29 Number of Forms 8283 received by the organization during the tax year for contributions for which the organization completed Form 8283, Part V, Donee Acknowledgement 29

	Yes	No
30a During the year, did the organization receive by contribution any property reported in Part I, lines 1 through 28, that it must hold for at least 3 years from the date of the initial contribution, and which isn't required to be used for exempt purposes for the entire holding period?		X
b If "Yes," describe the arrangement in Part II.		
31 Does the organization have a gift acceptance policy that requires the review of any nonstandard contributions?		X
32a Does the organization hire or use third parties or related organizations to solicit, process, or sell noncash contributions?		X
b If "Yes," describe in Part II.		
33 If the organization didn't report an amount in column (c) for a type of property for which column (a) is checked, describe in Part II.		

Part II Supplemental Information. Provide the information required by Part I, lines 30b, 32b, and 33, and whether the organization is reporting in Part I, column (b), the number of contributions, the number of items received, or a combination of both. Also complete this part for any additional information.

SCHEDULE M - SUPPLEMENTAL INFORMATION

APPROXIMATELY 70 DONORS OF NON-CASH ITEMS.



**SCHEDULE O
(Form 990)**

Department of the Treasury
Internal Revenue Service

Supplemental Information to Form 990 or 990-EZ

Complete to provide information for responses to specific questions on
Form 990 or 990-EZ or to provide any additional information.

Attach to Form 990 or Form 990-EZ.

Go to www.irs.gov/Form990 for the latest information.

OMB No. 1545-0047

2022

**Open to Public
Inspection**

Name of the organization

TEAM JACK FOUNDATION INC

Employer identification number

46-2301134

FORM 990, PART I, LINE 6

**VOLUNTEERS WORKED AT ALL EVENTS INCLUDING THE LARGE GALA EVENT AND
RADIOTHON. THE VARIOUS RAFFLE EVENTS WERE ALSO LARGELY RAN BY VOLUNTEERS.**

**FORM 990, PART VI, LINE 11B - ORGANIZATION'S PROCESS TO REVIEW FORM 990
DRAFT OF TAX RETURN IS REVIEWED BY EXECUTIVE DIRECTOR AND BOARD PRESIDENT
IN DETAIL AND PROVIDED TO OTHER DIRECTORS FOR COMMENTS AND QUESTIONS.
BOARD APPROVED FINAL DRAFT PRIOR TO FILING.**

**FORM 990, PART VI, LINE 12C - ENFORCEMENT OF CONFLICTS POLICY
DIRECTORS AND EMPLOYEES ARE REQUIRED TO COMPLETE AN ANNUAL REPORTING
STATEMENT REGARDING ANY CONFLICT OR DUALITY OF INTEREST STATEMENTS.**

**FORM 990, PART VI, LINE 15A - COMPENSATION PROCESS FOR TOP OFFICIAL
THE BOARD OF DIRECTORS REVIEW AND APPROVE ALL SALARIES AND BONUSES
ANNUALLY.**

**FORM 990, PART VI, LINE 15B - COMPENSATION PROCESS FOR OFFICERS
OTHER OFFICERS ARE NOT COMPENSATED. THERE ARE NO OTHER KEY EMPLOYEES.**

**FORM 990, PART VI, LINE 19 - GOVERNING DOCUMENTS DISCLOSURE EXPLANATION
THE FOUNDATION MAKES ITS GOVERNING DOCUMENTS, AUDIT AND TAX RETURNS
AVAILABLE TO THE PUBLIC UPON REQUEST. IN ADDITION INFORMATION IS AVAILABLE
ON GUIDESTAR.**

Name of the organization

Employer identification number

TEAM JACK FOUNDATION INC

46-2301134

FORM 990, PART XI, LINE 9 - OTHER CHANGES IN NET ASSETS EXPLANATION

OTHER EVENT EXPENSE NETTED WITH INCOME ON TAX RETURN \$ 104,525

DIRECT FUNDRAISING EVENT EXPENSES \$ -104,525



**SCHEDULE G
(Form 990 or
990-EZ)**

Fundraising Other Events

2022

For calendar year 2022, or tax year beginning , and ending

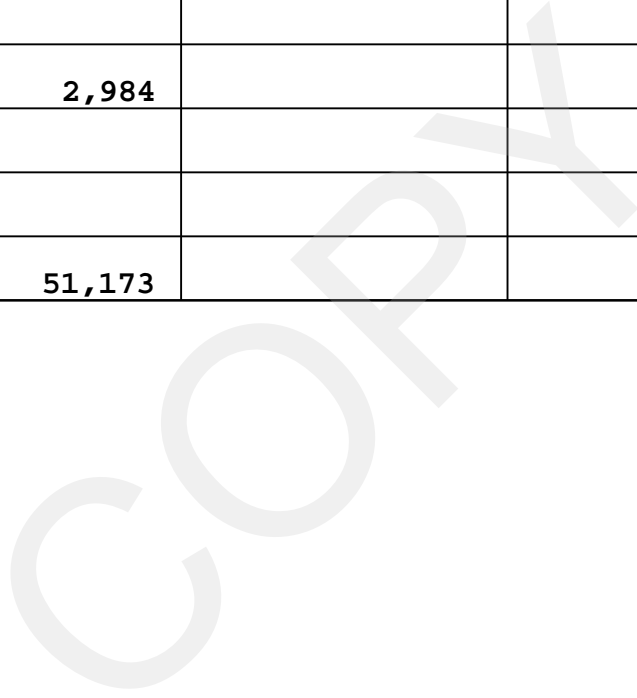
Name

Employer Identification Number

TEAM JACK FOUNDATION INC

46-2301134

		(a) Other event	(b) Other event	(c) Other event	(d) Total other events
		<u>OTHER EVENTS</u> (event type)	_____ (event type)	_____ (event type)	(add col. (a) through col. (c))
Revenue	1 Gross receipts	181,226			181,226
	2 Less: Charitable contributions	142,961			142,961
	3 Gross income (line 1 minus line 2)	38,265			38,265
Direct Expenses	4 Cash prizes	2,586			2,586
	5 Noncash prizes				
	6 Rent/facility costs	2,984			2,984
	7 Food/beverages				
	8 Entertainment				
	9 Other expenses	51,173			51,173



Taxable Interest on Investments

<u>Description</u>		<u>Amount</u>	<u>Unrelated Business</u>	<u>Exclusion Code</u>	<u>Postal Code</u>	<u>Acquired after 6/30/75</u>	<u>US Obs (\$ or %)</u>
INVESTMENT	INCOME	\$ 17,106		14			
	TOTAL	\$ <u>17,106</u>					

COPY

Federal Statements

Form 990, Part IX, Line 24e - All Other Expenses

Description	Total Expenses	Program Service	Management & General	Fund Raising
EDUCATION	\$ 733	\$	\$ 598	\$ 135
MEALS	44			44
TOTAL	\$ 777	\$ 0	\$ 598	\$ 179

COPY

Federal Statements

Schedule A, Part II, Line 1(e)

Description	Amount
	\$ 30,000
VARIOUS	21,793
VARIOUS	4,011
VARIOUS	7,601
VARIOUS	12,680
VARIOUS	31,370
OTHER CASH DONATIONS GENERAL GALA	284,703
CASH CONTRIBUTION	550,182
RADIOTHON	
CASH CONTRIBUTION	102,395
OTHER EVENTS	
CASH CONTRIBUTION	142,961
TOTAL	<u>\$ 1,187,696</u>

Schedule A, Part II, Line 5 - Excess Gifts

<u>Donor Name</u>	<u>Total</u>	<u>Excess</u>
THE HOME AGENCY	\$ 258,569	\$ 133,205
CREDIT UNION KIDS AT HEART	140,000	14,636
FAT BRAIN TOYS	315,944	190,580
FARMERS MUTUAL OF NEBRASKA	70,000	
VERA MAE JESSEN ESTATE	600,000	474,636
JIM BALDONADO	101,216	
MARK BURCH	68,795	
ST. ANTHONY FOUNDATION	50,000	
THE HOME AGENCY	50,000	
CREDIT UNITION KIDS AT HEART	50,000	
FAT BRAIN TOYS	66,786	
FARMERS MUTUAL OF NEBRASKA	25,000	
TOTAL	<u>\$ 1,796,310</u>	<u>\$ 813,057</u>

Federal Statements

Schedule A, Part II, Line 8(e)

Description	Amount
INVESTMENT INCOME	\$ 17,106
TOTAL	\$ <u>17,106</u>

Schedule A, Part II, Line 9(e)

Description	Amount
RAFFLE	\$ 66,407
RADIOTHON RAFFLE	49,991
LESS: DEDUCTIONS	-1,000
TOTAL	\$ <u>115,398</u>

Schedule A, Part II, Line 12 - Current year

Description	Amount
MERCHANDISE TEAM JACK	\$ 28,706
GALA	43,945
RADIOTHON	38,265
OTHER EVENTS	\$ <u>110,916</u>
TOTAL	\$ <u>110,916</u>

Gala

Other Direct Fundraising or Gaming Expenses

<u>Description</u>	<u>Amount</u>
CREDIT CARD FEES	\$ 9,437
OTHER EVENT EXPENSES	7,262
TRAVEL	6,313
PRINTING/POSTAGE	12,241
AUCTION ITEM EXP	7,975
TOTAL	<u>\$ 43,228</u>

COPY

Raffle

Other Direct Fundraising or Gaming Expenses

<u>Description</u>	<u>Amount</u>
CREDIT CARD FEES	\$ 3,260
OTHER EXPENSES	4,533
TOTAL	<u>\$ 7,793</u>

COPY

Radiothon

Other Direct Fundraising or Gaming Expenses

<u>Description</u>	<u>Amount</u>
CREDIT CARD FEES	\$ 2,741
TRAVEL	1,054
OTHER	497
ADV AND DIRECT MAILER	9,923
TOTAL	\$ <u>14,215</u>

COPY

Other Events

Other Direct Fundraising or Gaming Expenses

<u>Description</u>	<u>Amount</u>
CREDIT CARD FEES	\$ 9,783
MEALS	8,766
OTHER	1,728
TRAVEL	1,926
ADVERTISING & DIRECT MAIL	23,044
GREEN FEES AND OTHER	5,926
TOTAL	<u>\$ 51,173</u>

COPY